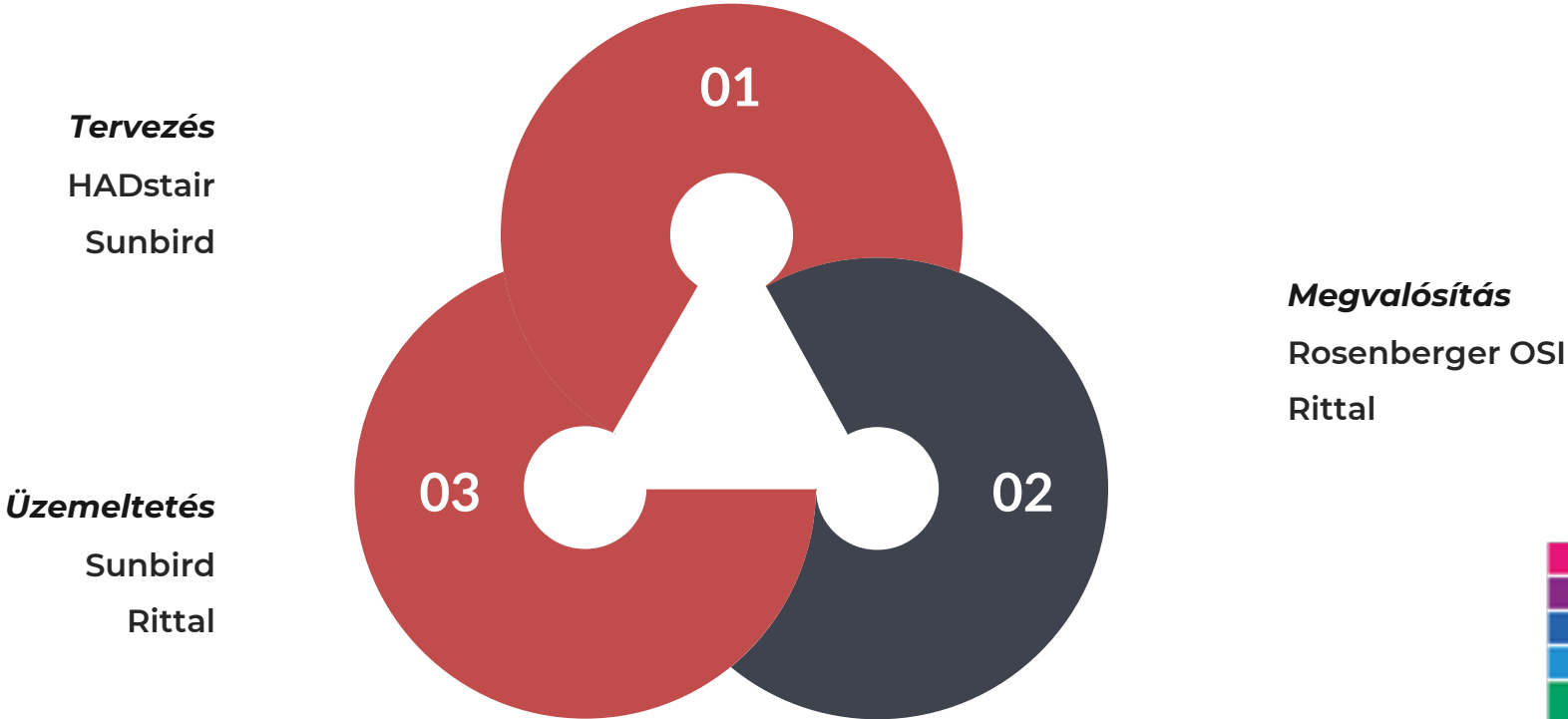


ROSI-Systems



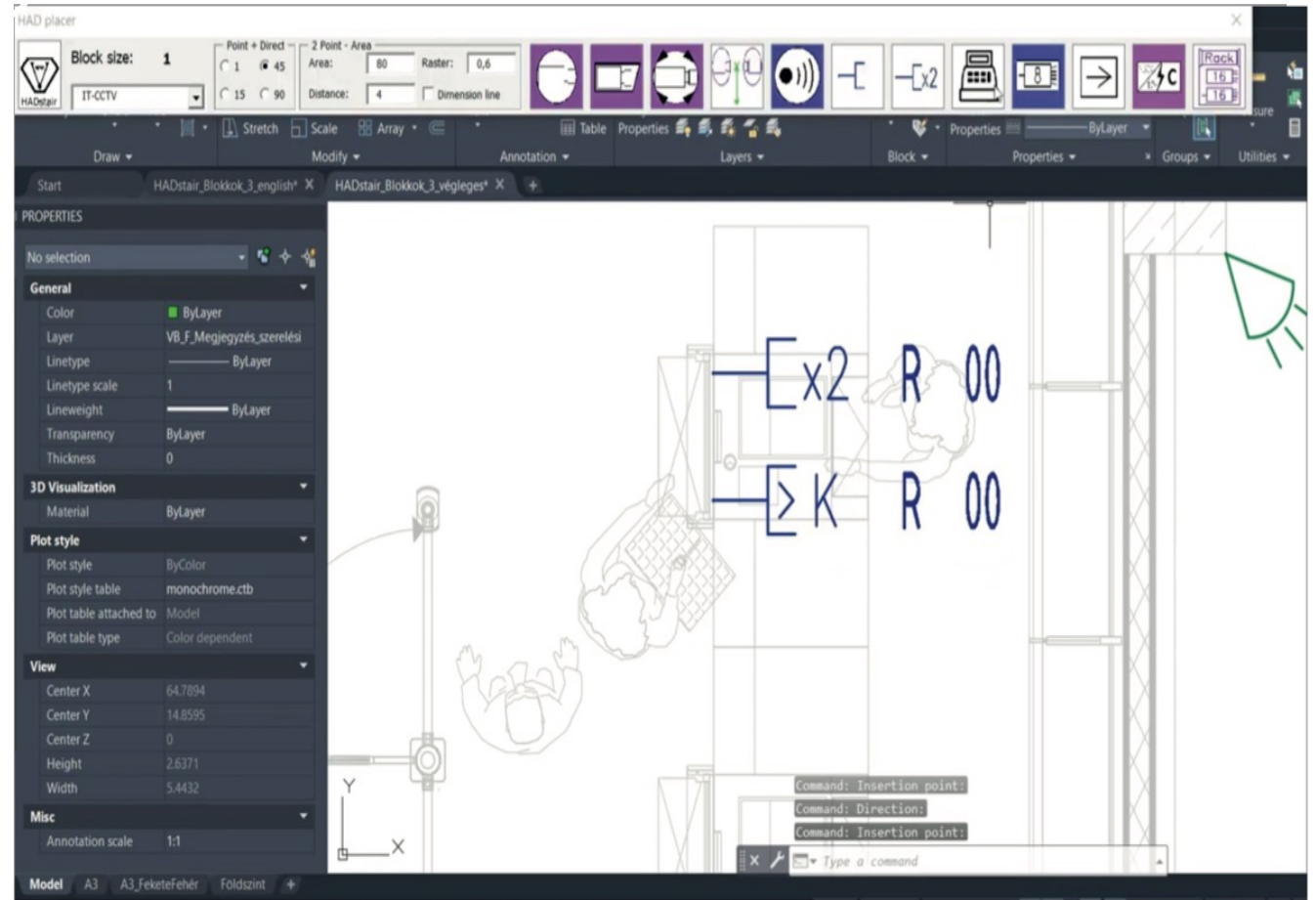
With speed of light.

Szinerergia



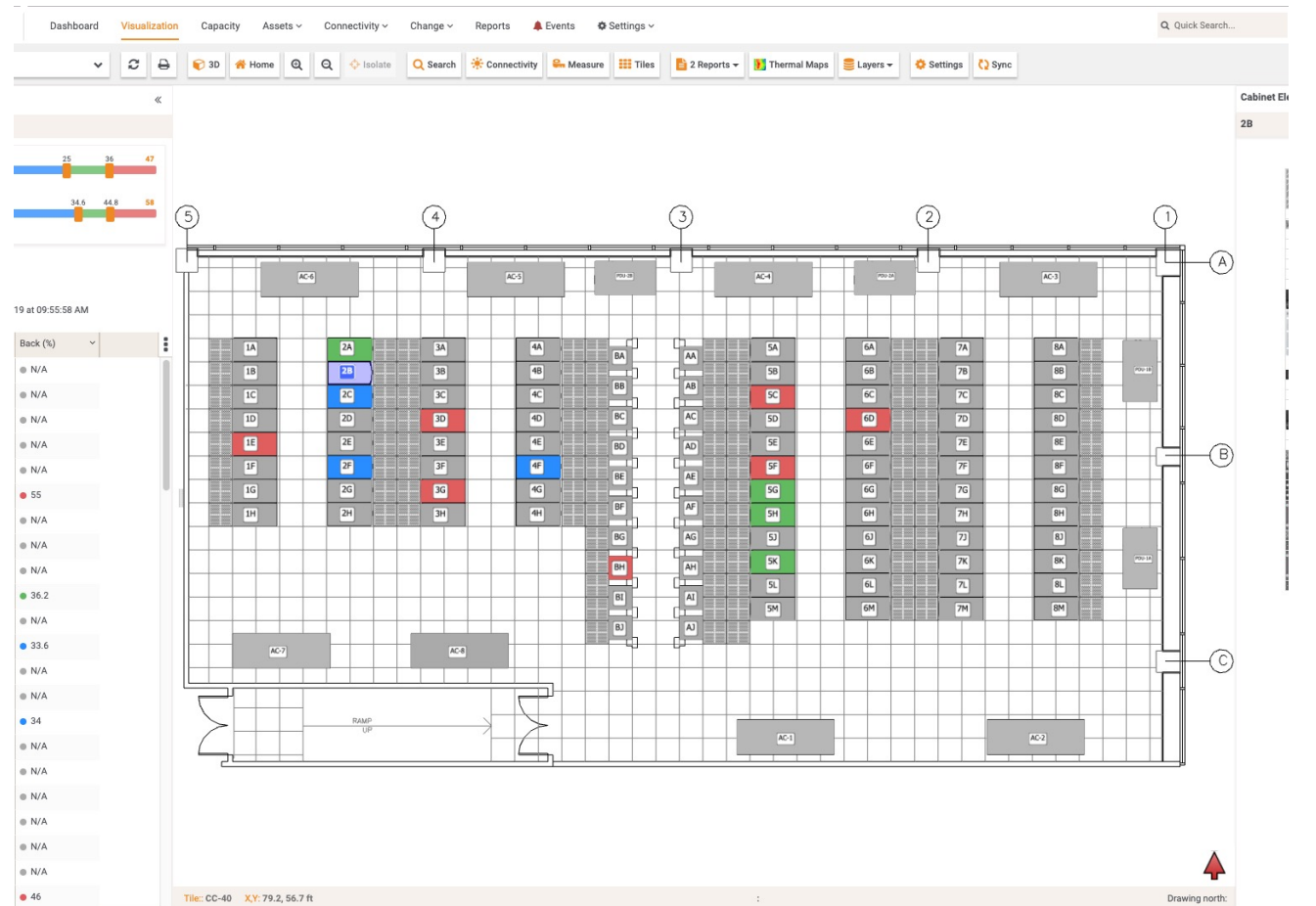
Tervezés

AUTOCAD alapon



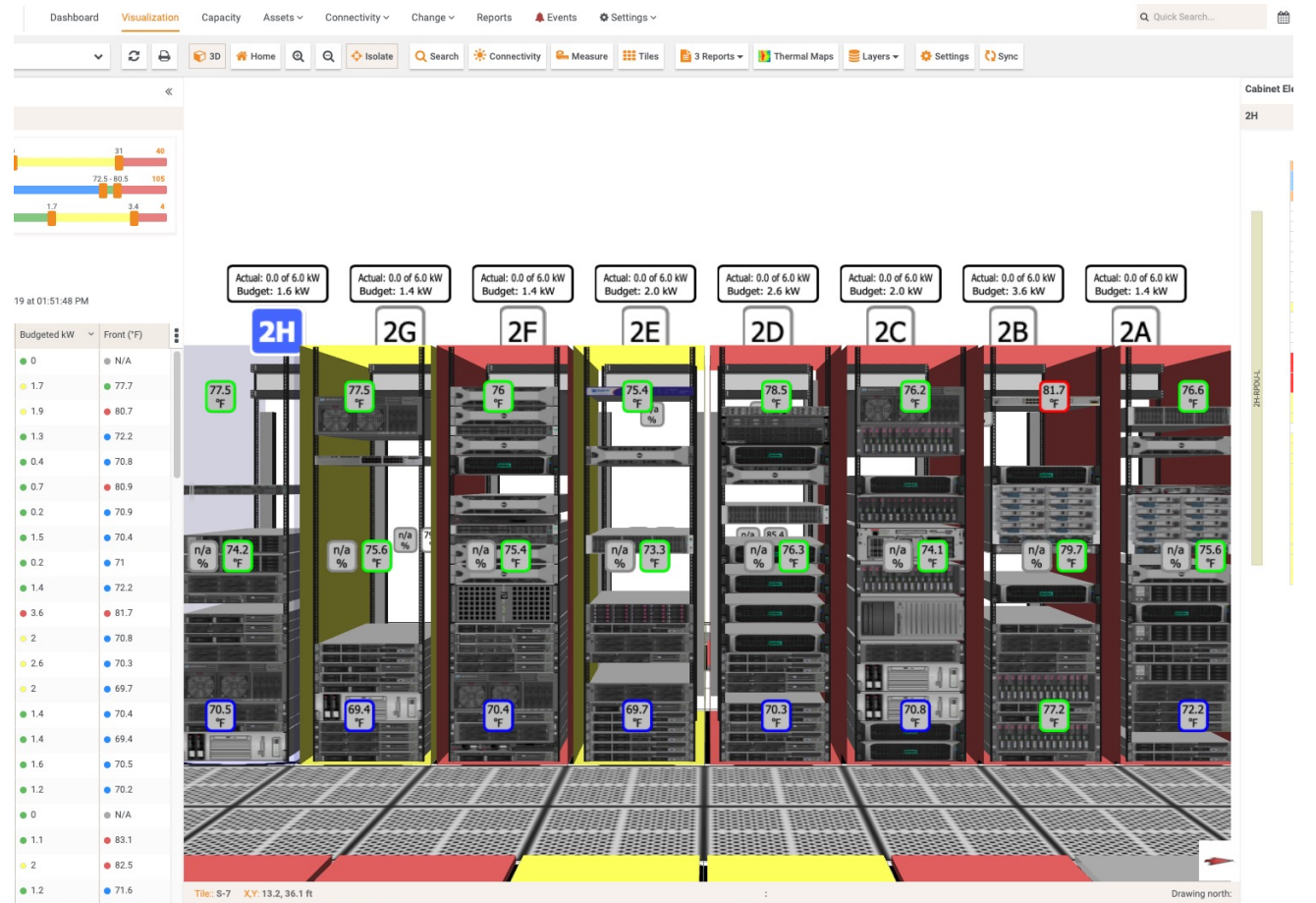
Modellezés

AUTOCAD rajzok beillesztése Sunbird rendszerbe



Modellezés

Szerverterem működésének modellezése tervek alapján



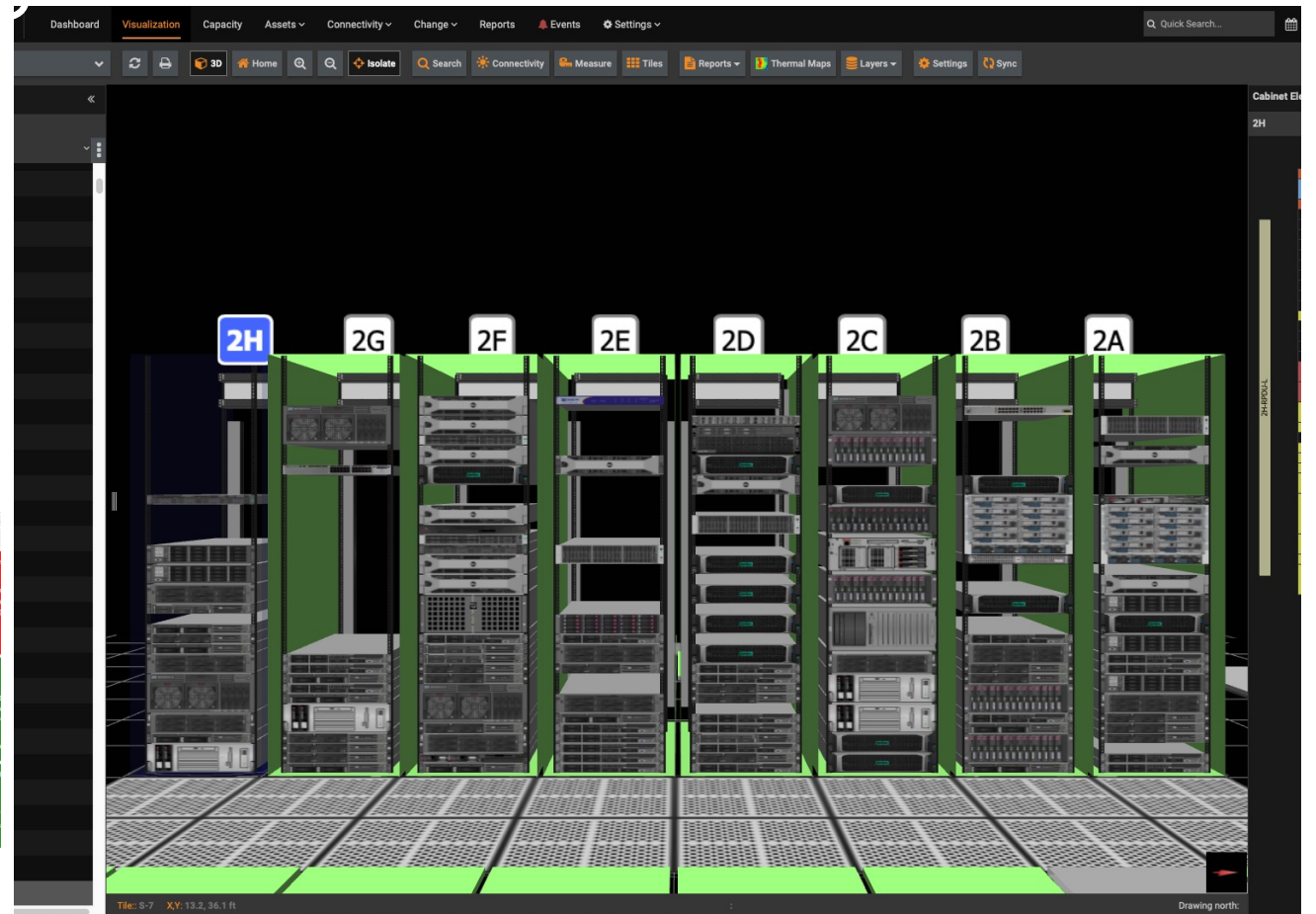
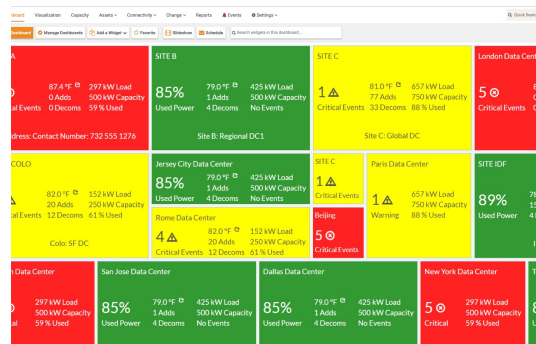
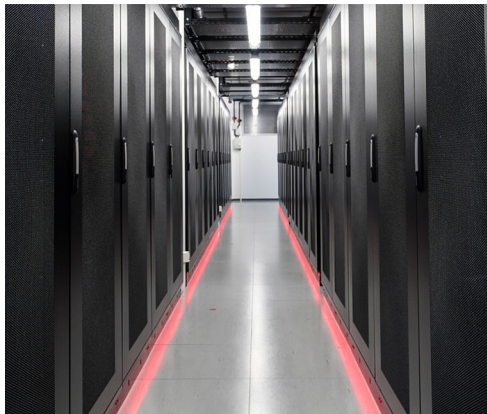
Megvalósítás

A tervek és modellezés után jöhet a “project” fázis



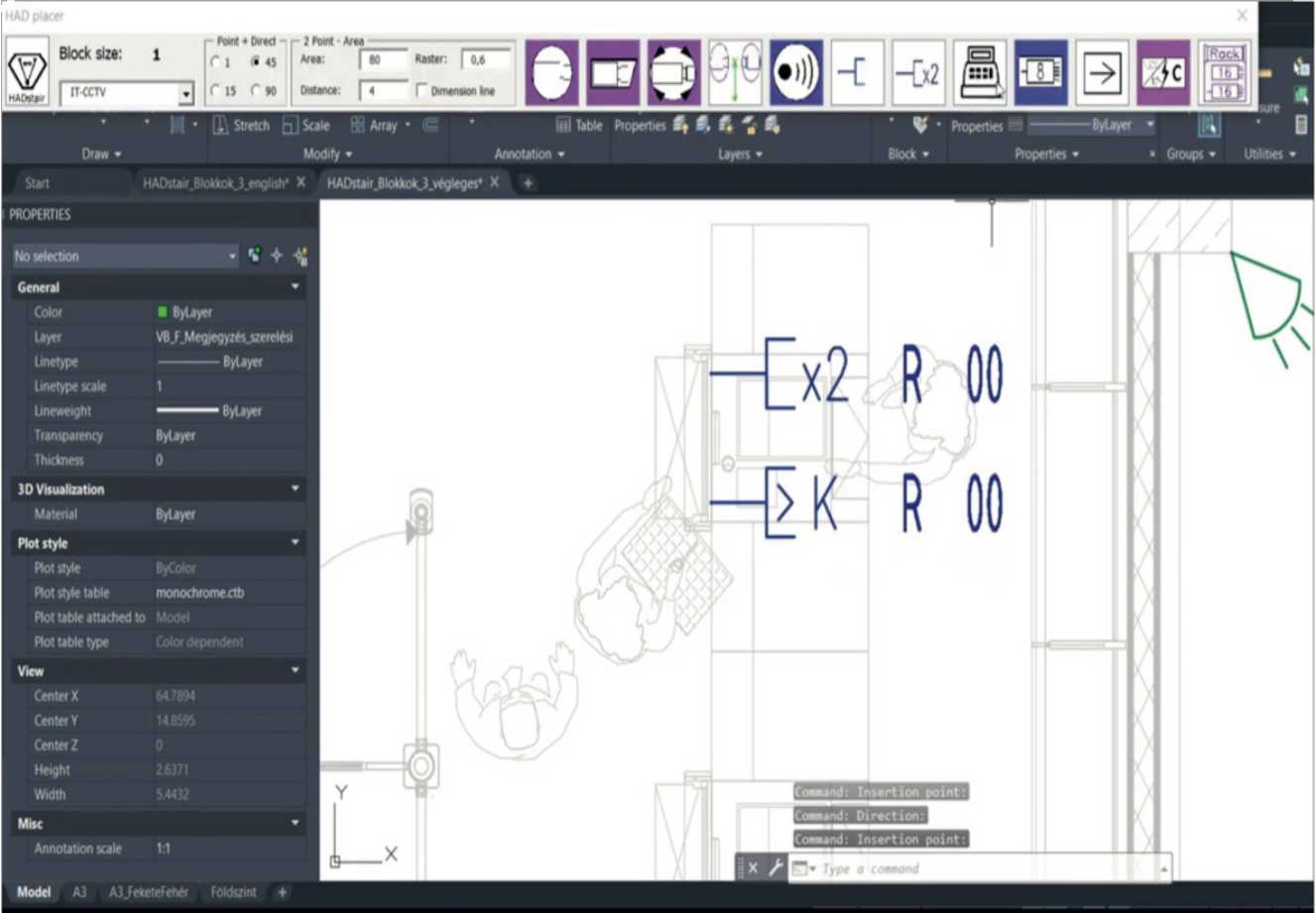
Üzemeltetés

Az elkészült terveket Sunbird rendszerbe illesztés után
 “bekapcsoljuk” az aktív mérő rendszerbe, illetve
 elindítjuk az adatbázis és üzemeltetési funkciókat



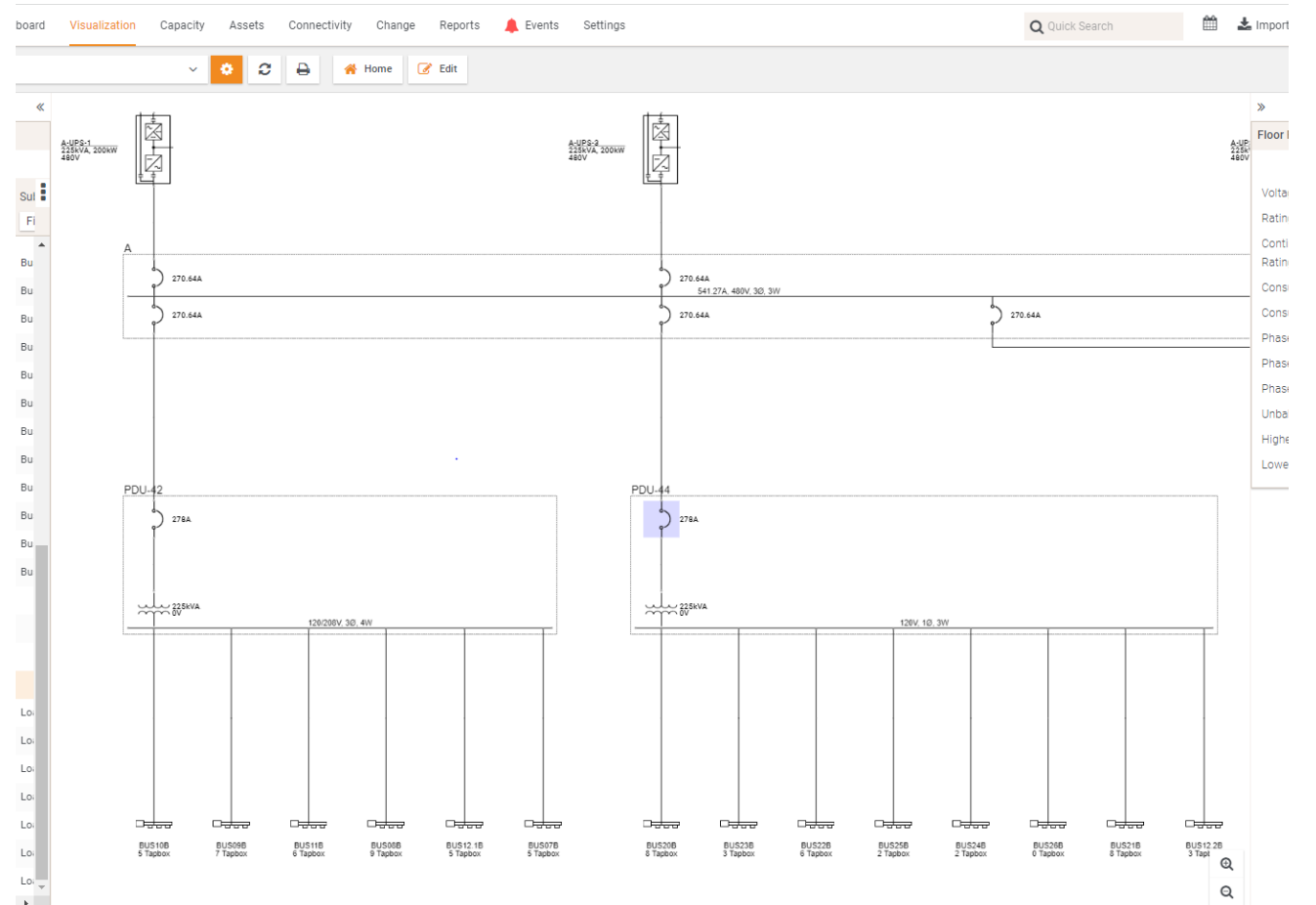
Tervezés

AUTOCAD alapon



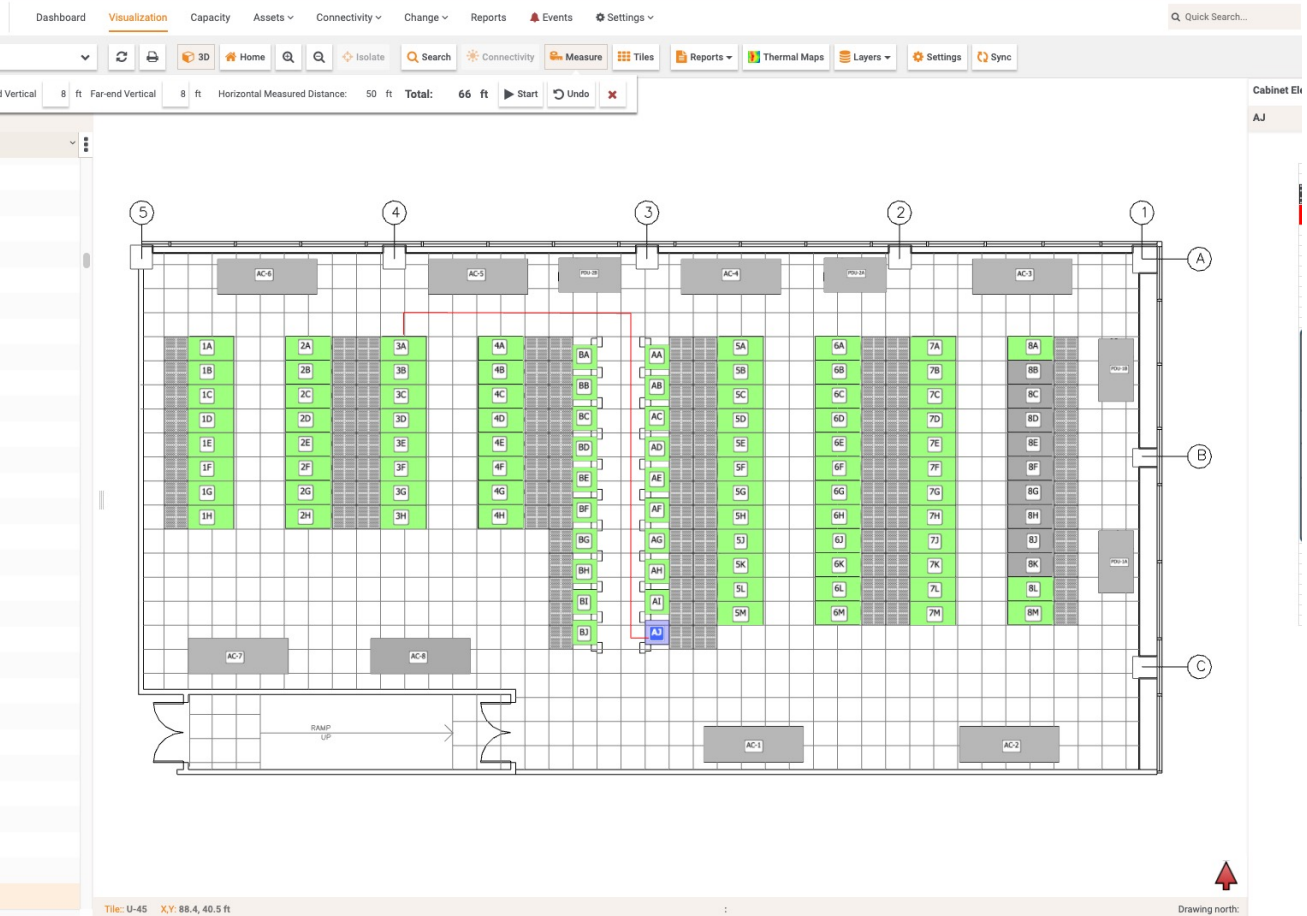
Tervezés

DC infrastruktúra felépítése



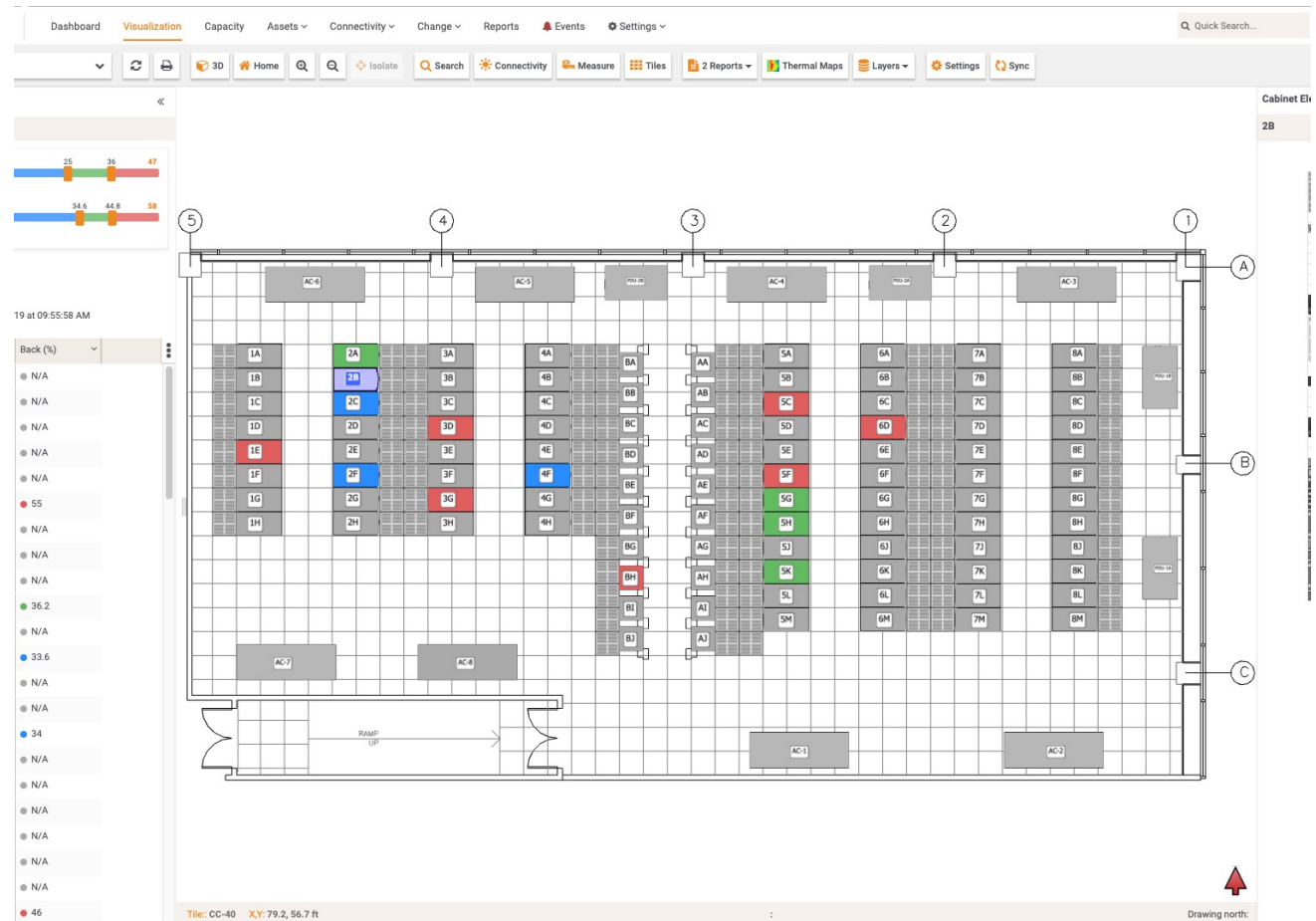
Tervezés

DC infrastruktúra felépítése



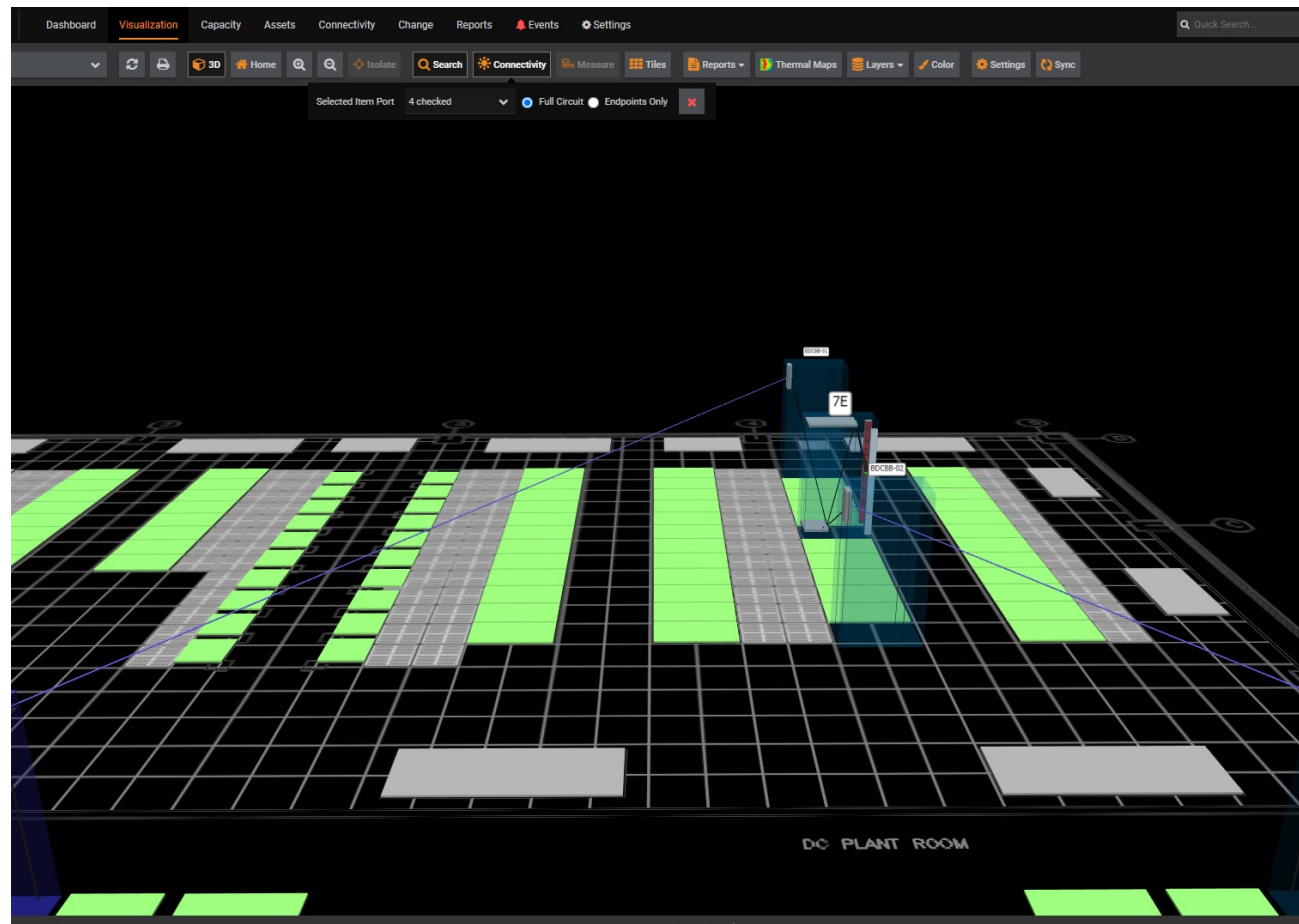
Tervezés

DC infrastruktúra felépítése



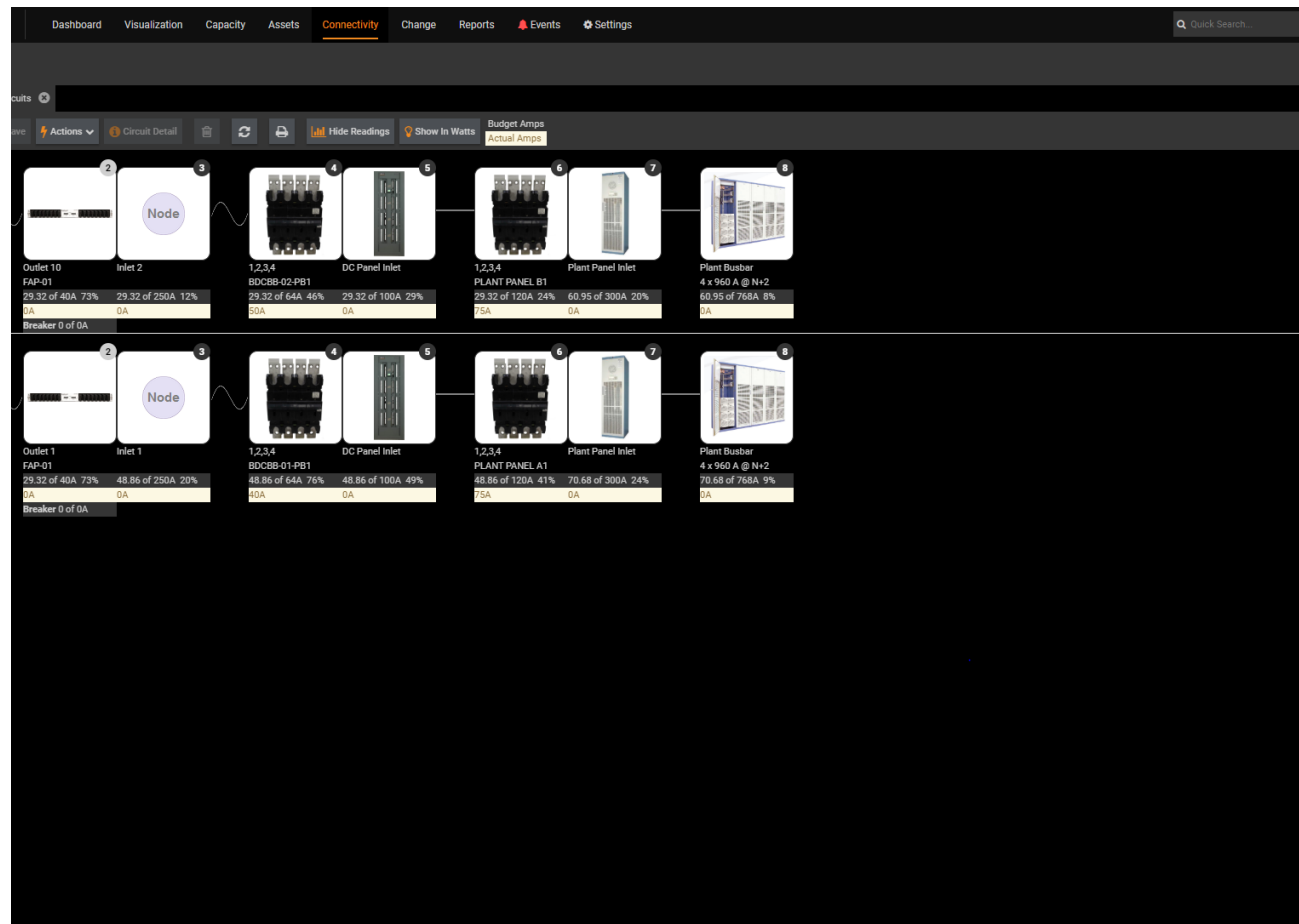
Tervezés

DC infrastruktúra felépítése



Tervezés

DC infrastruktúra felépítése



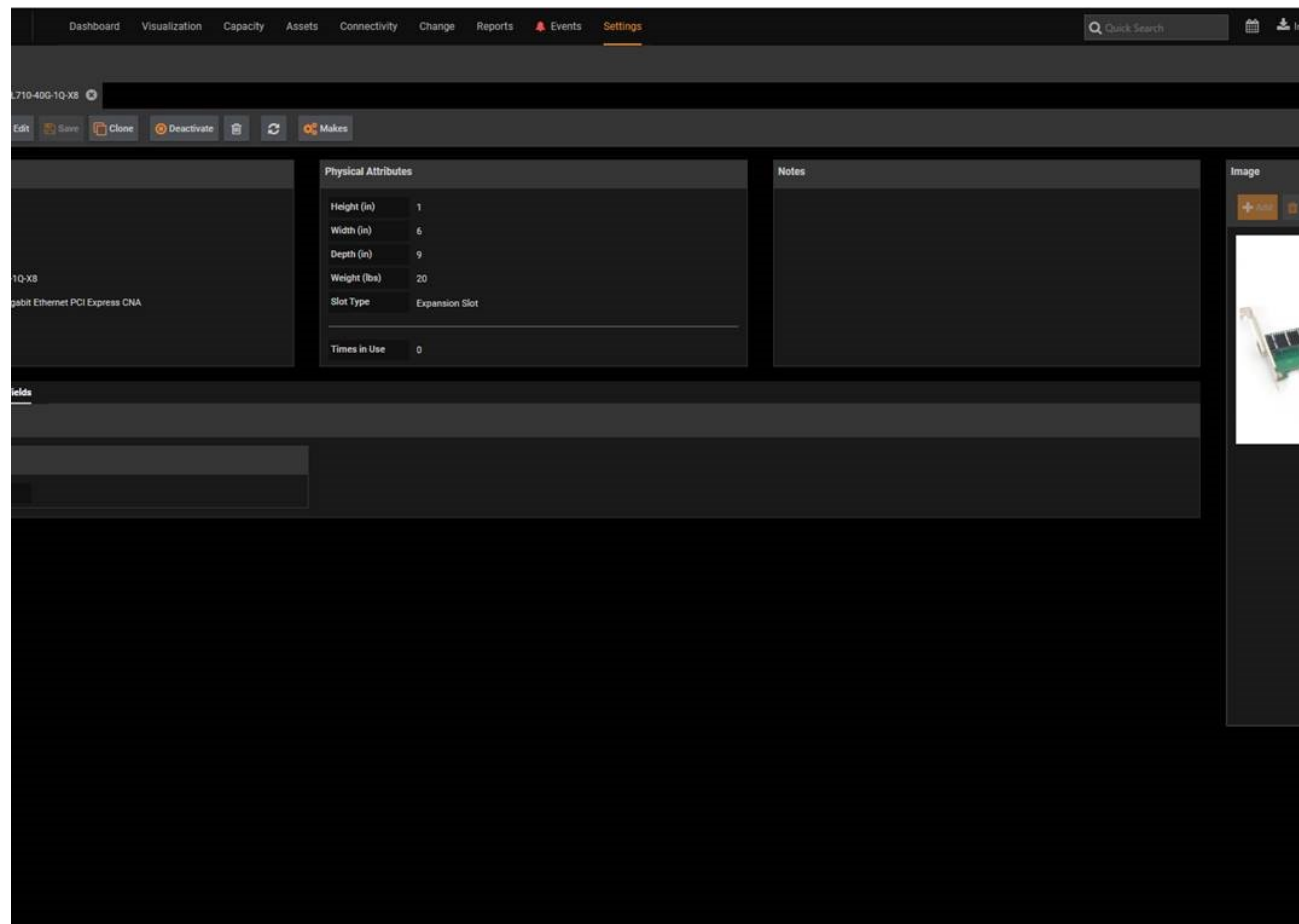
Tervezés

DC infrastruktúra felépítése



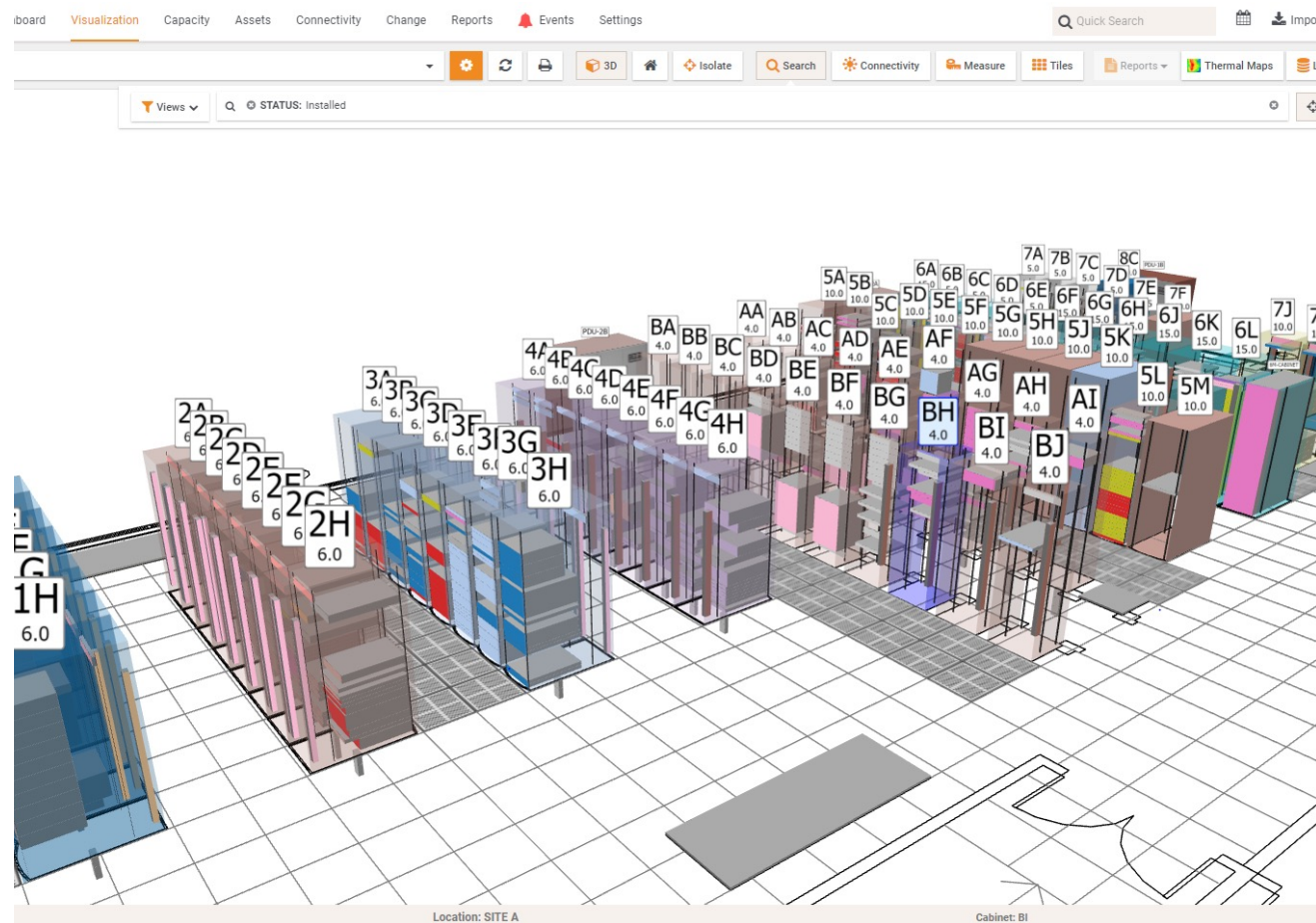
Tervezés

DC infrastruktúra felépítése



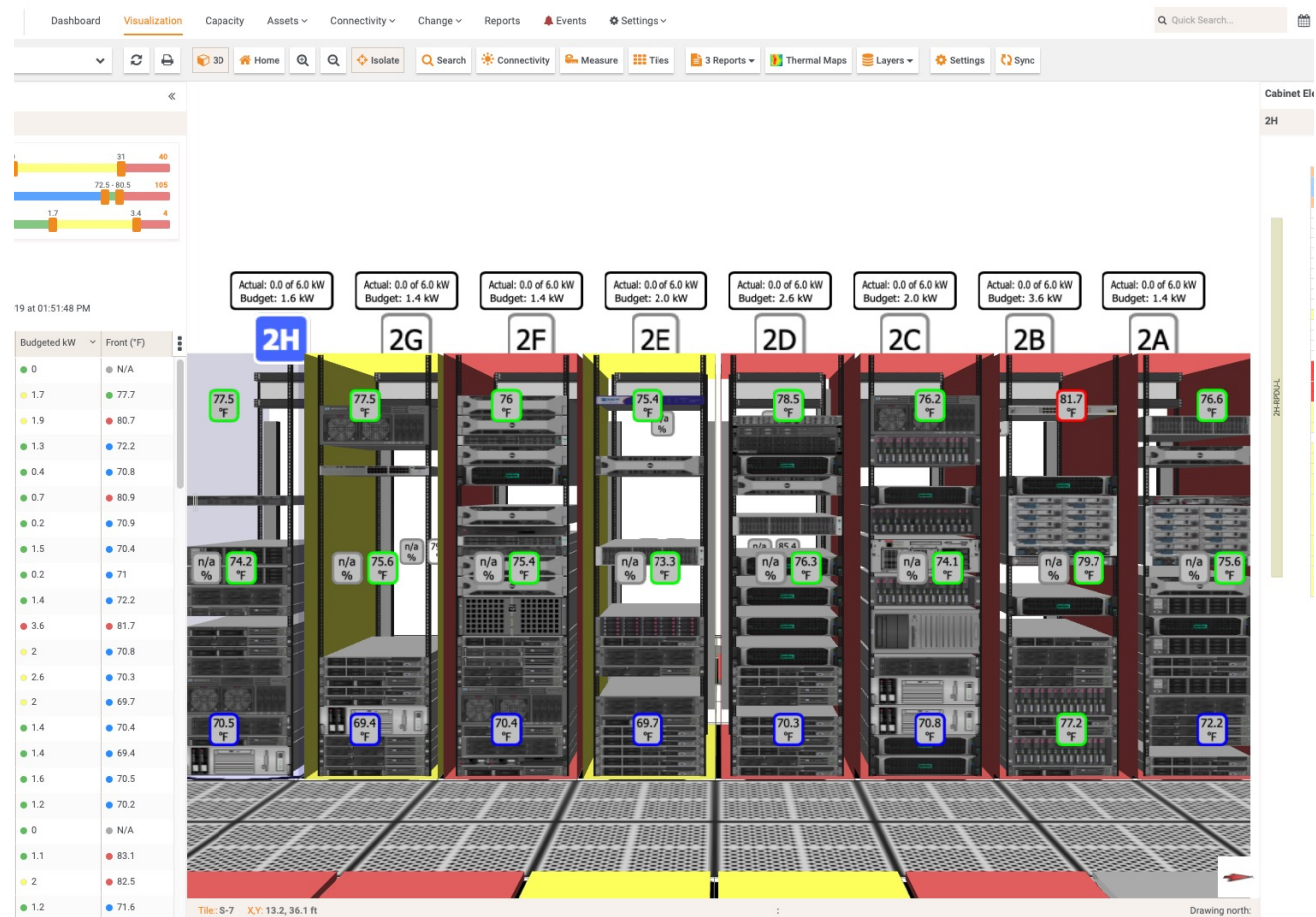
Modellezés

Szerverterem működésének modellezése tervek alapján



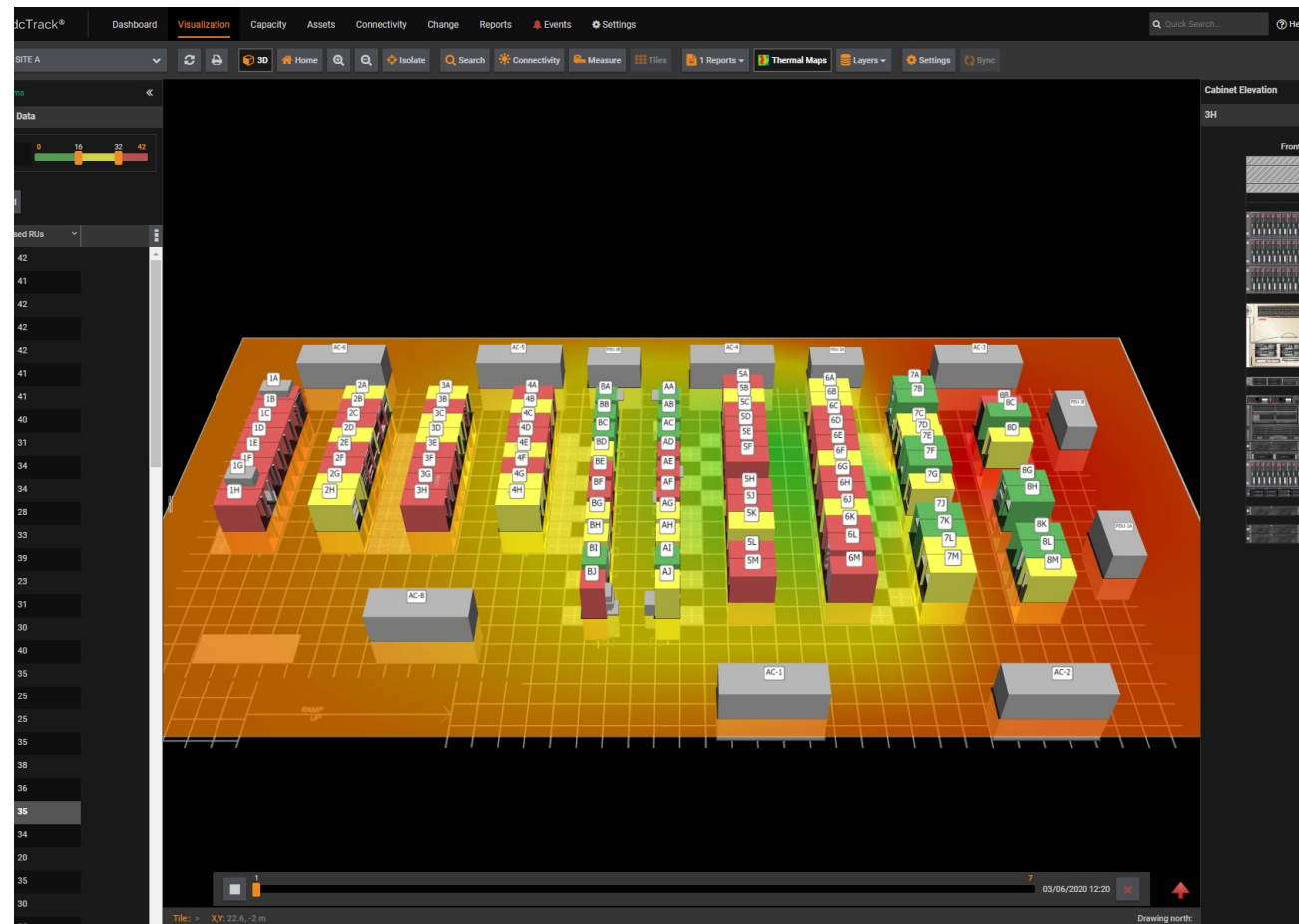
Modellezés

Szerverterem működésének modellezése tervek alapján



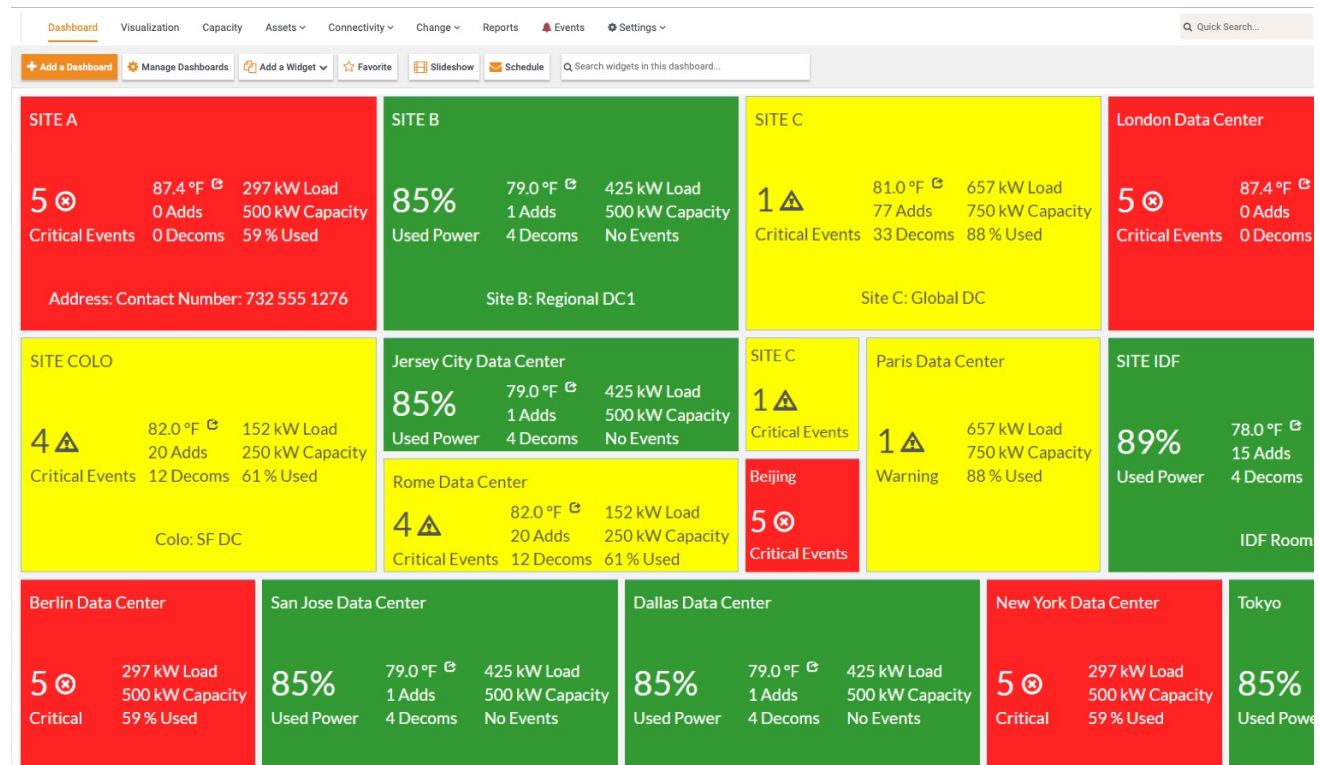
Modellezés

Szerverterem működésének modellezése tervek alapján



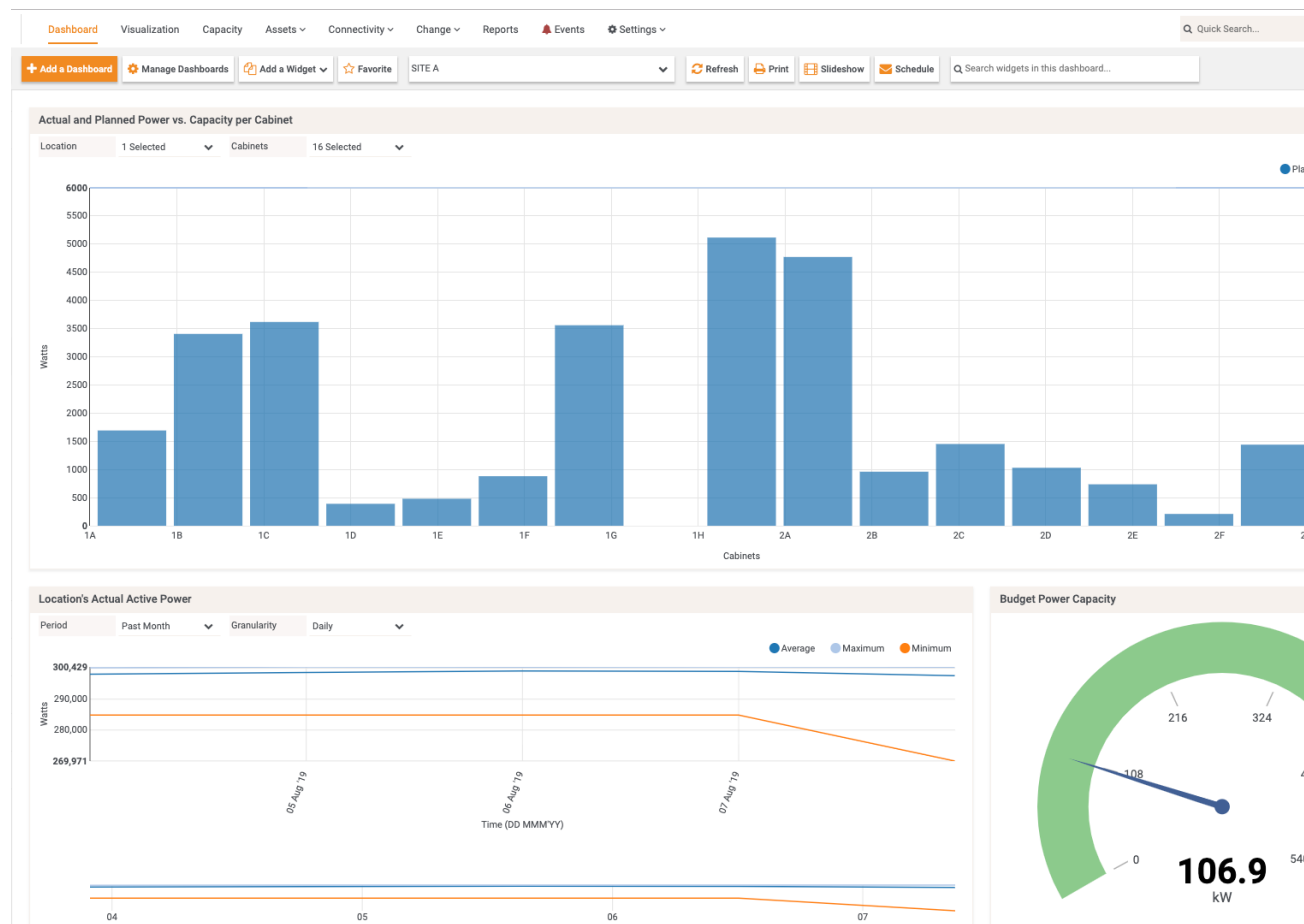
Üzemeltetés

*Az elkészült terveket Sunbird rendszerbe illesztés után
"bekapcsoljuk" az aktív mérő rendszerbe, illetve
elindítjuk az adatbázis és üzemeltetési funkciókat*



Üzemeltetés

Egyszerűen



Üzemeltetés

Szenzorok állapota

Item	Sensor Type	Serial Number	Position In Rack	Status	State	Latest Reading	30 Day High	30 Day Moving Av	30 Day Low	Data Center	Critical Low	Warning Low	Warning
76.1	Temperature		Inlet	CRITICAL		62.6°F	62.6°F	62.6°F	62.6°F				
76.1	Temperature		Inlet	WARNING		78.8°F	78.8°F	78.8°F	78.8°F				
10.160	Temperature		Inlet	CRITICAL		62.6°F	62.6°F	62.6°F	62.6°F				
10.160	Humidity		Inlet	CRITICAL		63.0%	63.0%	63.0%	63.0%				
10.160	Humidity		Outlet	CRITICAL		63.0%	63.0%	63.0%	63.0%				
10.162	Temperature		Inlet	GOOD		71.6°F	71.6°F	71.6°F	71.6°F				
10.162	Humidity		Inlet	GOOD		52.0%	52.0%	52.0%	52.0%				
10.162	Humidity		Outlet	GOOD		52.0%	52.0%	52.0%	52.0%				
10.165	Temperature		Inlet	CRITICAL		82.0°F	82.0°F	82.0°F	82.0°F	Jersey City			
10.174	Temperature		Inlet	CRITICAL		6.3°F	6.3°F	6.3°F	6.3°F				
10.174	Temperature		Inlet	CRITICAL		6.3°F	6.3°F	6.3°F	6.3°F				
10.174	Temperature		Inlet	CRITICAL		6.4°F	6.4°F	6.4°F	6.4°F				
10.174	Temperature		Inlet	CRITICAL		6.3°F	6.3°F	6.3°F	6.3°F				
10.174	Temperature		Inlet	CRITICAL		6.4°F	6.4°F	6.4°F	6.4°F				
10.174	Temperature		Inlet	CRITICAL		6.3°F	6.3°F	6.3°F	6.3°F				
10.174	Temperature		Inlet	CRITICAL		6.3°F	6.3°F	6.3°F	6.3°F				
10.174	Temperature		Inlet	CRITICAL		6.6°F	6.6°F	6.6°F	6.6°F				
10.174	Temperature		Inlet	CRITICAL		6.3°F	6.3°F	6.3°F	6.3°F				
10.174	Temperature		Inlet	CRITICAL		6.4°F	6.4°F	6.4°F	6.4°F				
10.174	Temperature		Inlet	CRITICAL		6.3°F	6.3°F	6.3°F	6.3°F				
10.174	Temperature		Inlet	CRITICAL		7.0°F	7.0°F	7.0°F	7.0°F				
10.174	Temperature		Inlet	CRITICAL		6.9°F	6.9°F	6.9°F	6.9°F				

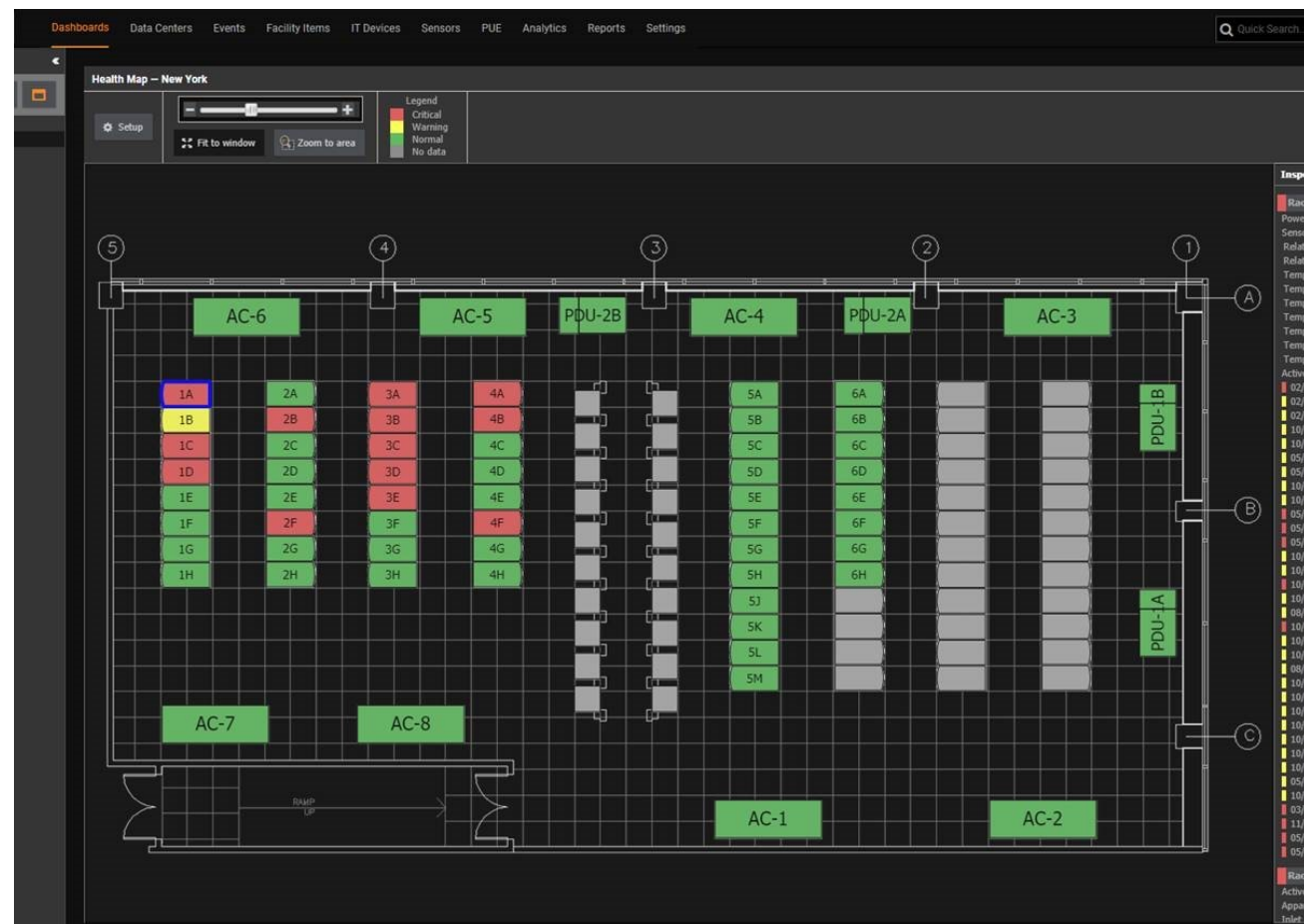
Track. Refer to this guide before making changes in Power IQ. Licensed to Internal Use Only

Power IQ 7.1.2-3 | Copyright



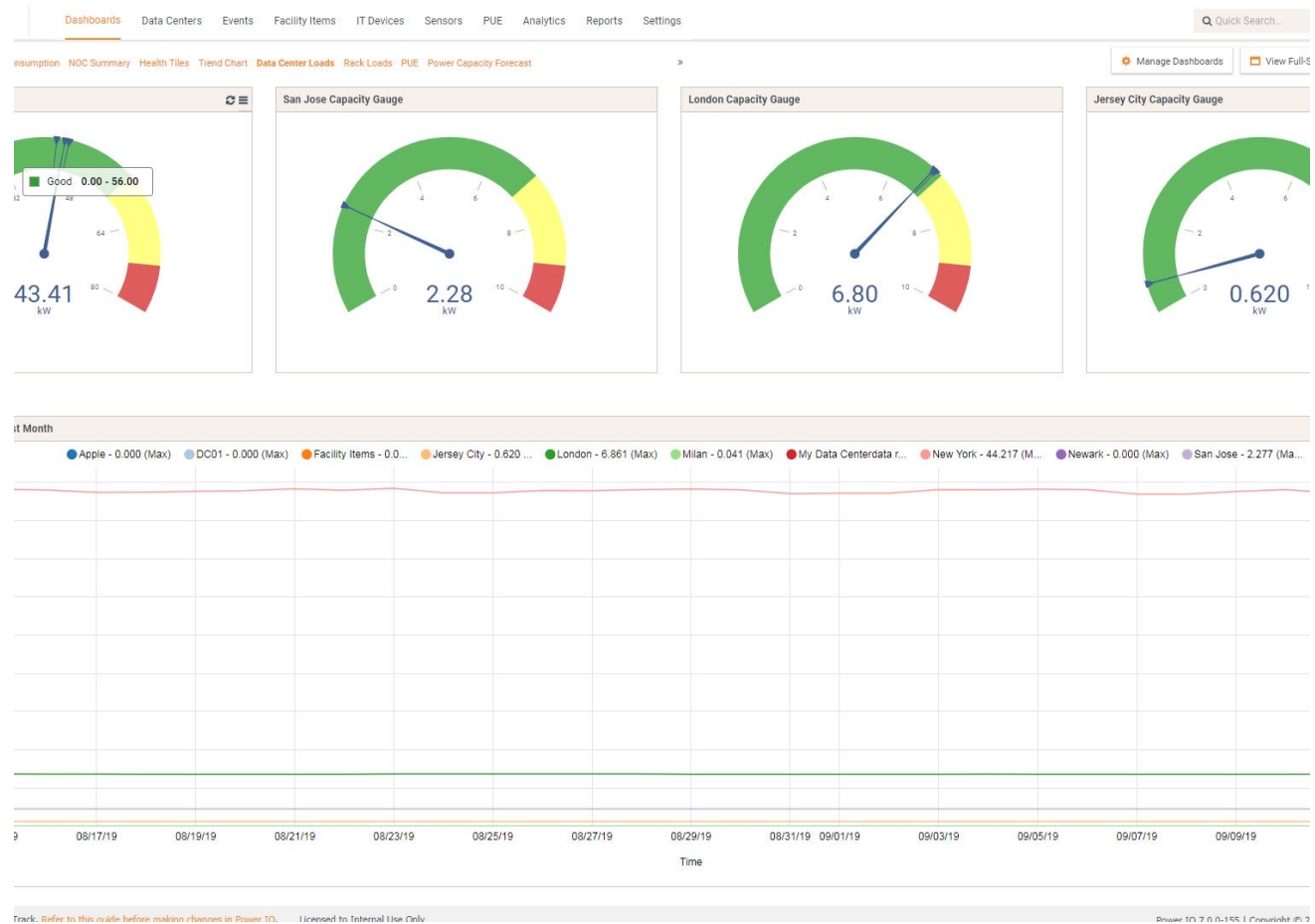
Üzemeltetés

Szerverterem állapot



Üzemeltetés

Energia ellátottság



Üzemeltetés

Alkalmazások terhelési kimutatása

Application (IT Device)	Total kWh	Avg kW	Min kW	Max kW
Testing Lab	58.99	0.08	0.08	0.10
R&D Lab	53.46	0.08	0.07	0.10
Email	39.60	0.05	0.05	0.09
Help Desk	37.55	0.05	0.05	0.08
Social Media Apps	17.12	0.02	0.02	0.02
Hosting	16.51	0.02	0.02	0.02
ERP	6.69	0.01	0.01	0.01
project jc	0.00	0.00	0.00	0.00
Payroll	0.00	0.00	0.00	0.00



Üzemeltetés

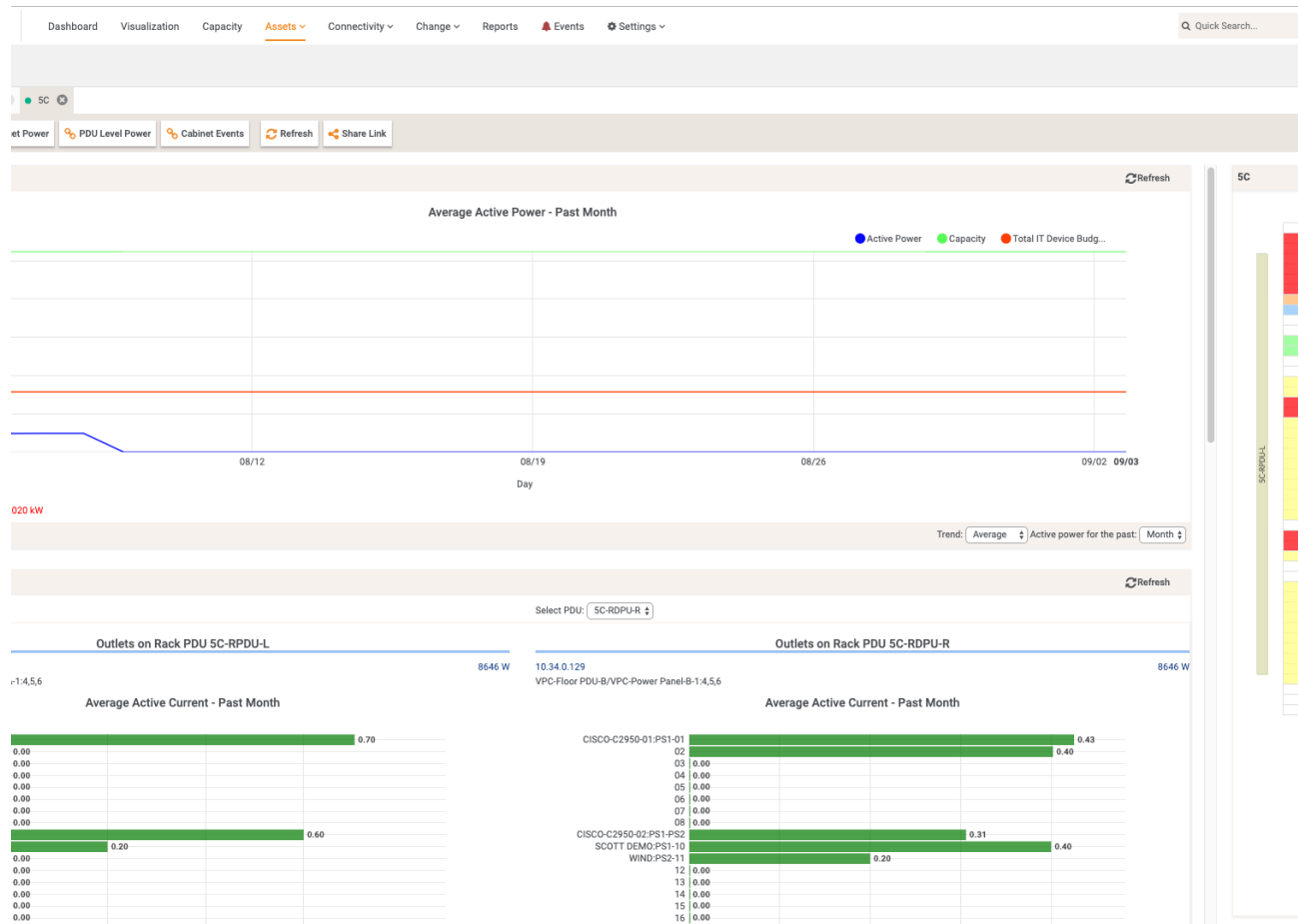
Biztonsági kamera felvételek

The screenshot displays a web-based dashboard for Power IQ. At the top, there is a navigation menu with items: Dashboards, Data Centers, Events, Facility Items, IT Devices, Sensors, PUE, Analytics, Reports, and Settings. A search bar labeled 'Quick Search...' is located on the right. Below the navigation, a secondary menu includes: Consumption, NOC Summary, Health Tiles, Trend Chart, Data Center Loads, Rack Loads, PUE, and Power Capacity Forecast. On the far right of this menu are 'Manage Dashboards' and 'View Full-Screen' buttons. The main content area is a 3x5 grid of 15 security camera feeds, each showing a different perspective of a server room aisle with rows of server racks and a person in the distance. At the bottom of the dashboard, there is a footer with the text: 'Track. Refer to this guide before making changes in Power IQ. Licensed to Internal Use Only' and 'Power IQ 7.0.0-155 | Copyright © 2007'.



Üzemeltetés

Rack szintű teljesítmény riport



Üzemeltetés

Egyedi riportok

Dashboard Visualization Capacity Assets Connectivity Change Reports Events Settings

Quick Search...

+ Add a Dashboard Manage Dashboards Add a Widget Favorite Refresh Print Slideshow Schedule Search widgets in this dashboard...

All Cabinet RU

Rows: 200 Columns: 7

LocationCode	cabinetname	uposition	Status	ItemName	Cust
CC-B2	RACK-13	1	OPEN		
CC-B2	RACK-13	2	OPEN		
CC-B2	RACK-13	3	OPEN		
CC-B2	RACK-13	4	OPEN		
CC-B2	RACK-13	5	OPEN		
CC-B2	RACK-13	6	OPEN		
CC-B2	RACK-13	7	OPEN		
CC-B2	RACK-13	8	OPEN		
CC-B2	RACK-13	9	OPEN		
CC-B2	RACK-13	10	OPEN		
CC-B2	RACK-13	11	OPEN		
CC-B2	RACK-13	12	OPEN		
CC-B2	RACK-13	13	OPEN		
CC-B2	RACK-13	14	OPEN		

Cabinet RUs used with Customer

Rows: 352 Columns: 9

Itemid	Itemname	site	cabinetname	Customer	totalavailablel...	usedfrontrear	usedfront	usedrear
21262	RACK-13	CC-B2	RACK-13		42	0	0	0
21263	RACK-14	CC-B2	RACK-14		42	0	0	0
21264	RACK-15	CC-B2	RACK-15		42	0	0	0
21265	RACK-16	CC-B2	RACK-16		42	0	0	0
21266	RACK-17	CC-B2	RACK-17		42	0	0	0
21267	RACK-18	CC-B2	RACK-18		42	0	0	0
21260	RACK-25	CC-B2	RACK-25		42	0	0	0
21261	RACK-26	CC-B2	RACK-26		42	0	0	0
4825	R1	Demo L...	R1		45	18	18	10
4826	R2	Demo L...	R2		45	29	29	21
4827	WS-101	Demo L...	WS-101		8	6	3	6
4828	WS-102	Demo L...	WS-102		8	6	3	6
4829	WS-103	Demo L...	WS-103		8	6	3	6
4830	WS-104	Demo L...	WS-104		8	6	3	6

Device Audit Trail - Order by Change Date

Rows: 31606 Columns: 11

LocationCode	ItemName	Customer	Class	Action	Field	ElectronicAssetTag	ChangedFrom	Cha
SITE A	6E-RPDU-L		Rack PDU	UPDATE	Port Name		Output 53	Outl
SITE A	6E-RPDU-L		Rack PDU	UPDATE	Port Name		Output 54	Outl
SITE A	6E-RPDU-L		Rack PDU	UPDATE	Port Name		Output 52	Outl
SITE A	6E-RPDU-L		Rack PDU	UPDATE	Port Name		Output 50	Outl
SITE A	6E-RPDU-L		Rack PDU	UPDATE	Port Name		Output 51	Outl
SITE A	6E-RPDU-L		Rack PDU	UPDATE	Port Name		Output 49	Outl
SITE A	6E-RPDU-L		Rack PDU	UPDATE	Port Name		Output 47	Outl
SITE A	6E-RPDU-L		Rack PDU	UPDATE	Port Name		Output 48	Outl
SITE A	6E-RPDU-L		Rack PDU	UPDATE	Port Name		Output 45	Outl
SITE A	6E-RPDU-L		Rack PDU	UPDATE	Port Name		Output 46	Outl

Power Capacity Per Rack to BTU/hr

Rows: 293 Columns: 5

ItemName	Class	LocationName	PowerCapacitykW	PowerCapacityBTUhr
101	Cabinet	Demo Site Colocati...	10	34121.4
102	Cabinet	Demo Site Colocati...	10	34121.4
103	Cabinet	Demo Site Colocati...	10	34121.4
104	Cabinet	Demo Site Colocati...	10	34121.4
105	Cabinet	Demo Site Colocati...	10	34121.4
106	Cabinet	Demo Site Colocati...	10	34121.4
107	Cabinet	Demo Site Colocati...	10	34121.4
108	Cabinet	Demo Site Colocati...	10	34121.4
109	Cabinet	Demo Site Colocati...	10	34121.4
110	Cabinet	Demo Site Colocati...	10	34121.4
111	Cabinet	Demo Site A	6	20477.6



Üzemeltetés

Igény feladás

Dashboard Visualization Capacity Assets Connectivity **Change** Reports Events Settings

19WO-00096

Print Refresh

3096

Attachments

New Connect Port Net3a on CLARITY03

Assigned To

Jason Dawson <jason.dawson@sunbirdcim.com>
Tony Fisher <tony.fisher@sunbirdcim.com>

Order History

ser

Description	Target Date	Approved By	Approval Date
New Connect Port Net3a on CLARITY03		Justin Capone	07/17/2019



Üzemeltetés

Esemény kezelés

Dashboard Visualization Capacity Assets Connectivity Change Reports Events Settings						Quick Search...				
id						Clear All	Purge All	Export	Refresh	Search events...
0						Last updated 09/04/2019 05:09 PM				
Severity	Event Type	Source	Status	Summary		Event Details				
				Name	Value					
ormational	Power IQ Update	Power IQ (10.34.0.201)	Active	Fields [Name] of PDU 4A-RPDU were updated directly on Power IQ 10.34.0.201 but direct update on Power IQ is only supported for fields [].						
ormational	Power IQ Update	Power IQ (10.34.0.201)	Active	Fields [Name] of PDU 4A-RPDU were updated directly on Power IQ 10.34.0.201 but direct update on Power IQ is only supported for fields [].						
ormational	Power IQ Update	Power IQ (10.34.0.201)	Active	Fields [Name] of PDU 4A-RPDU were updated directly on Power IQ 10.34.0.201 but direct update on Power IQ is only supported for fields [].						
ormational	Power IQ Update	Power IQ (10.34.0.201)	Active	Fields [Name] of PDU 4A-RPDU were updated directly on Power IQ 10.34.0.201 but direct update on Power IQ is only supported for fields [].						
ormational	Power IQ Update	Power IQ (10.34.0.201)	Active	Power IQ has an incorrect value for operations version for entity with Monitoring ID 1.pdu:24 [value is 14 but should be 12], so will not process this update from Power IQ.						
irring	Power IQ Update	Power IQ (10.34.0.201)	Active	Cannot sync item [HG-SRV-100], parent cabinet [HG-CABINET-TEMPLATE] is not integrated.						
irring	Power IQ Update	Power IQ (10.34.0.201)	Active	Cannot sync item [HG-SRV-100], parent cabinet [HG-CABINET-TEMPLATE] is not integrated.						
ormational	Power IQ Update	Power IQ (10.34.0.201)	Active	Power IQ has an incorrect value for operations version for entity with Monitoring ID 1.pdu:24 [value is 14 but should be 12], so will not process this update from Power IQ.						
irring	Power IQ Update	Power IQ (10.34.0.201)	Active	Cannot sync item [HG-SW-01], parent cabinet [HG-CABINET-TEMPLATE] is not integrated.						
irring	Power IQ Update	Power IQ (10.34.0.201)	Active	Cannot sync item [HG-SRV-100], parent cabinet [HG-CABINET-TEMPLATE] is not integrated.						
irring	Power IQ Update	Power IQ (10.34.0.201)	Active	Cannot sync item [HG-SW-01], parent cabinet [HG-CABINET-TEMPLATE] is not integrated.						
irring	Power IQ Update	Power IQ (10.34.0.201)	Active	Cannot sync item [HG-SRV-100], parent cabinet [HG-CABINET-TEMPLATE] is not integrated.						
irring	Power IQ Update	Power IQ (10.34.0.201)	Active	Cannot sync item [HG-SW-01], parent cabinet [HG-CABINET-TEMPLATE] is not integrated.						
irring	Power IQ Update	Power IQ (10.34.0.201)	Active	Cannot sync item [HG-SRV-100], parent cabinet [HG-CABINET-TEMPLATE] is not integrated.						
irring	Power IQ Update	Power IQ (10.34.0.201)	Active	Cannot sync item [HG-SW-01], parent cabinet [HG-CABINET-TEMPLATE] is not integrated.						
irring	Power IQ Update	Power IQ (10.34.0.201)	Active	Cannot sync item [HG-SRV-100], parent cabinet [HG-CABINET-TEMPLATE] is not integrated.						
irring	Power IQ Update	Power IQ (10.34.0.201)	Active	Cannot sync item [HG-SW-01], parent cabinet [HG-CABINET-TEMPLATE] is not integrated.						
ormational	Place All	Place All (null)	Active	Unsuccessful operation						
ormational	Place All	Place All (null)	Active	Unsuccessful operation						
ormational	Power IQ Update	Power IQ (10.34.0.201)	Active	Fields [Name] of PDU 4A-RPDU were updated directly on Power IQ 10.34.0.201 but direct update on Power IQ is only supported for fields [].						
ormational	Power IQ Update	Power IQ (10.34.0.201)	Active	Fields [Name] of PDU 4A-RPDU were updated directly on Power IQ 10.34.0.201 but direct update on Power IQ is only supported for fields [].						
ormational	Sync Floor Map Data	Power IQ (10.34.0.201)	Active	Get Readings for SITE A floor map data completed.						
tical	Invalid sensor response	dcTrack	Active	6A-RPDU-L sensor Dry Contact 1 index 20, invalid sensor type provided						
tical	Invalid sensor response	dcTrack	Active	6A-RPDU-L sensor Dry Contact 4 index 29, invalid sensor type provided						
tical	Invalid sensor response	dcTrack	Active	6A-RPDU-L sensor Powered Dry Contact 2 index 10, invalid sensor type provided						
tical	Invalid sensor response	dcTrack	Active	6A-RPDU-L sensor Dry Contact 3 index 28, invalid sensor type provided						
tical	Invalid sensor response	dcTrack	Active	6A-RPDU-L sensor Dry Contact 4 (Decommissioned) index 26, invalid sensor type provided						
tical	Invalid sensor response	dcTrack	Active	6A-RPDU-L sensor Powered Dry Contact 1 index 9, invalid sensor type provided						

Üzemeltetés

Módosítás igénylés

Dashboard Visualization Capacity Assets Connectivity **Change** Reports Events Settings

1900153

Print Refresh

Request Priority: High
 Due Date: 08/08/2019
 Work Order: 19WO-00093

er issued
 ect Port Eth01 on TESTSERVER-3747548

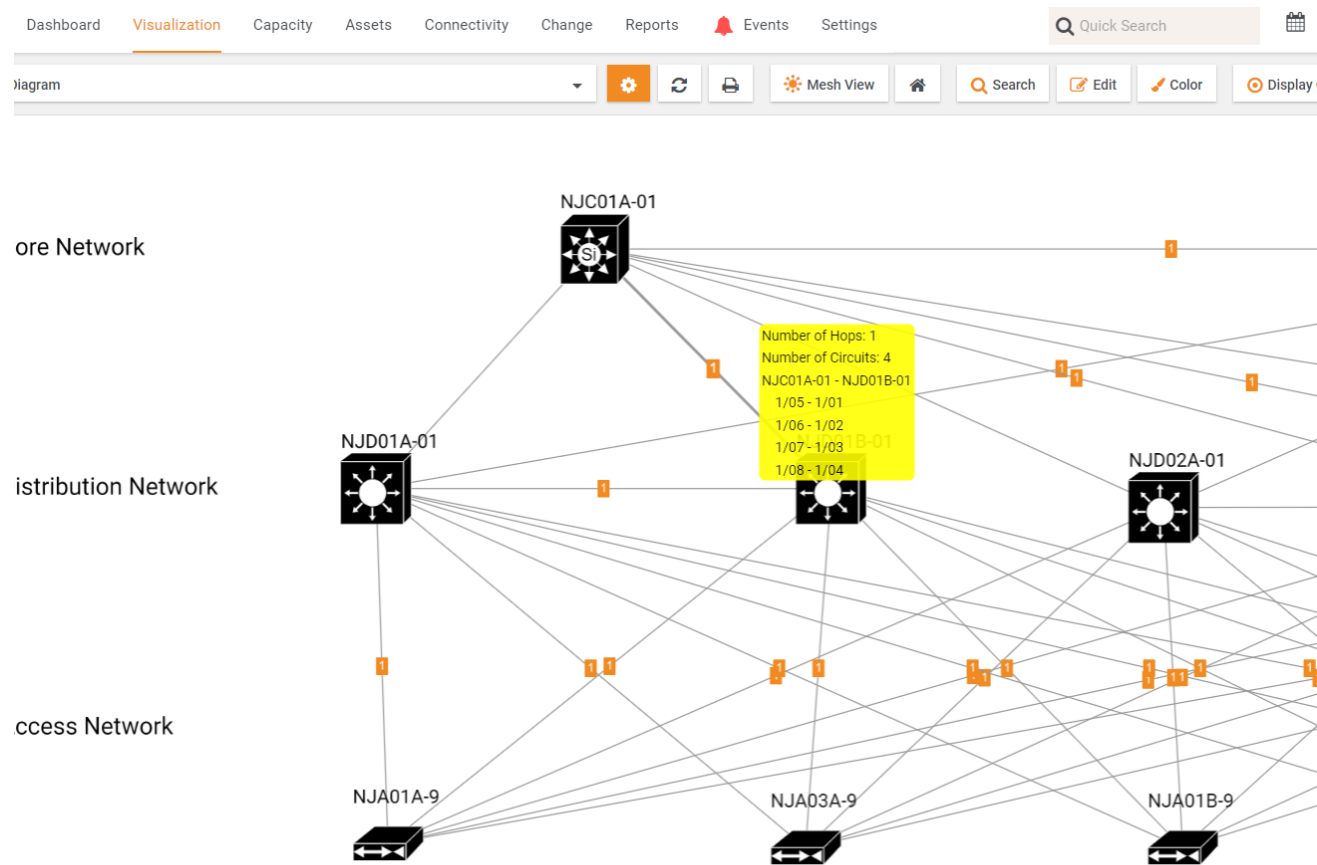
Attachments
 New Connect Port Eth01 on TESTSERVER-3747548

est History

tatus	Action Taken By	Target Date	Completion Date	Notify
ompleted	Justin Capone		08/08/2019	jdavis <jonathan.davis@sunbirdcim.com> nbannon <niall.bannon@sunbirdcim.com>
ompleted	Justin Capone	08/08/2019	08/08/2019	jdavis <jonathan.davis@sunbirdcim.com> jcapone <justin.capone@sunbirdcim.com>
ompleted	Hank Gonzalez	08/08/2019	08/13/2019	kaank <kaan.kutlug@sunbirdcim.com> globaloperator <globalbob@test.com>
Progress		08/08/2019		jdavis <jonathan.davis@sunbirdcim.com> jcapone <justin.capone@sunbirdcim.com>
ew				jdavis <jonathan.davis@sunbirdcim.com> jcapone <justin.capone@sunbirdcim.com>

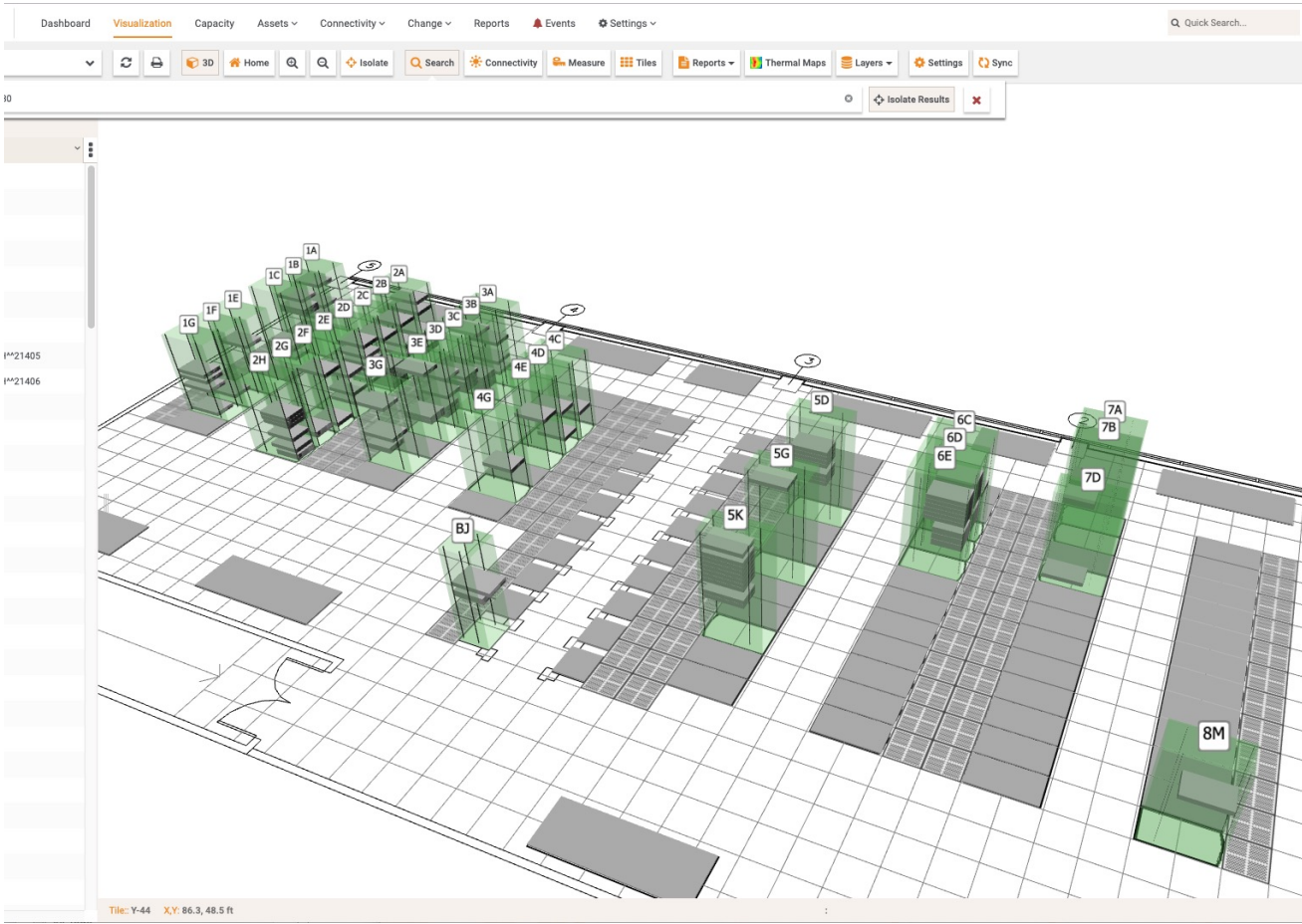
Üzemeltetés

Logikai kapcsolatok



Audit

Eszközök keresése



Audit

Belépési pontok szerint

Dashboards Data Centers Events Facility Items IT Devices Sensors PUE Analytics **Reports** Settings Quick Search...

Preview/Edit Edit Run Now Delete Export

Sunbird Reported: 2019/03/14 01:35 PM

A Door Audit Report for NY

Date Range: 2019/03/07 – 2019/03/14
Location: New York

Rack: "1A" - Door: "Front Door 1A" (Front)

Date Time	User	Requested Action	Access Summary
2019/03/12 10:06:38 AM	jim	Unlock	A successful request to unlock door "Front Door 1A" was sent by jim.
2019/03/12 10:06:40 AM			Door "Front Door 1A" has been unlocked.
2019/03/12 10:06:44 AM	jim	Lock	A successful request to lock door "Front Door 1A" was sent by jim.
2019/03/12 10:06:46 AM			Door "Front Door 1A" has been locked.
2019/03/12 01:11:23 PM	jim	Unlock	A successful request to unlock door "Front Door 1A" was sent by jim.
2019/03/12 01:11:25 PM			Door "Front Door 1A" has been unlocked.
2019/03/12 01:11:40 PM	Relock timer	Lock	A successful request to lock door "Front Door 1A" was triggered by relock timer.
2019/03/12 01:11:41 PM			Door "Front Door 1A" has been locked.
2019/03/13 07:33:36 AM	jim	Unlock	A successful request to unlock door "Front Door 1A" was sent by jim.
2019/03/13 07:33:37 AM			Door "Front Door 1A" has been unlocked.
2019/03/13 07:33:42 AM	jim	Lock	A successful request to lock door "Front Door 1A" was sent by jim.
2019/03/13 07:33:44 AM			Door "Front Door 1A" has been locked.
2019/03/13 11:33:59 AM	jim	Unlock	A successful request to unlock door "Front Door 1A" was sent by jim.
2019/03/13 11:34:01 AM			Door "Front Door 1A" has been unlocked.
2019/03/13 11:34:15 AM	Relock timer	Lock	A successful request to lock door "Front Door 1A" was triggered by relock

Track. Refer to this guide before making changes in Power IQ. Licensed to Internal Use Only. Power IQ 7.0.0-155 | Copyright © 2007

Audit

Riasztások

11

Severity	Event	Summary	Target	Status	Data Center	Row	Rack
CRITICAL	Inlet Over Critical Three Phase Deviation	Inlet 1 on D29 Vertical has a three phase deviation reading of 8.3	D29 Vertical	Active	New York		2F
WARNING	Inlet Over Warning Three Phase Deviation	Inlet 1 on PDU-2B has a three phase deviation reading of 8.3	PDU-2B	Cleared by system event	Facility Items		
WARNING	Inlet Over Warning Three Phase Deviation	Inlet 1 on px-10-128-200-10 has a three phase deviation reading of 8.3	px-10-128-200-10	Active			
WARNING	Inlet Over Warning Three Phase Deviation	Inlet 1 on px-10-128-200-11 has a three phase deviation reading of 8.3	px-10-128-200-11	Active			
WARNING	Inlet Over Warning Three Phase Deviation	Inlet 1 on PDU-2A has a three phase deviation reading of 8.3	PDU-2A	Active	Facility Items		
CRITICAL	Inlet Over Critical Three Phase Deviation	Inlet 1 on D29 Vertical has a three phase deviation reading of 8.3	D29 Vertical	Cleared by system event	New York		2F
WARNING	Inlet Over Warning Three Phase Deviation	Inlet 1 on px-10-128-200-11 has a three phase deviation reading of 8.3	px-10-128-200-11	Cleared by system event			
WARNING	Inlet Over Warning Three Phase Deviation	Inlet 1 on px-10-128-200-10 has a three phase deviation reading of 8.3	px-10-128-200-10	Cleared by system event			
WARNING	Inlet Over Warning Three Phase Deviation	Inlet 1 on PDU-2B has a three phase deviation reading of 8.3	PDU-2B	Cleared by system event	Facility Items		
CRITICAL	Inlet Over Critical Three Phase Deviation	Inlet 1 on D29 Vertical has a three phase deviation reading of 8.3	D29 Vertical	Cleared by system event	New York		2F
WARNING	Inlet Over Warning Three Phase Deviation	Inlet 1 on PDU-2A has a three phase deviation reading of 8.3	PDU-2A	Cleared by system event	Facility Items		
WARNING	Inlet Over Warning Three Phase Deviation	Inlet 1 on PDU-2A has a three phase deviation reading of 8.3	PDU-2A	Cleared by system event	Facility Items		
WARNING	Inlet Over Warning Three Phase Deviation	Inlet 1 on PDU-2B has a three phase deviation reading of 8.3	PDU-2B	Cleared by system event	Facility Items		
WARNING	Inlet Over Warning Three Phase Deviation	Inlet 1 on px-10-128-200-11 has a three phase deviation reading of 8.3	px-10-128-200-11	Cleared by system event			
WARNING	Inlet Over Warning Three Phase Deviation	Inlet 1 on px-10-128-200-10 has a three phase deviation reading of 8.3	px-10-128-200-10	Cleared by system event			
CRITICAL	Inlet Over Critical Three Phase Deviation	Inlet 1 on D29 Vertical has a three phase deviation reading of 8.3	D29 Vertical	Cleared by system event	New York		2F
WARNING	Inlet Over Warning Three Phase Deviation	Inlet 1 on PDU-2B has a three phase deviation reading of 8.3	PDU-2B	Cleared by system event	Facility Items		
WARNING	Inlet Over Warning Three Phase Deviation	Inlet 1 on px-10-128-200-10 has a three phase deviation reading of 8.3	px-10-128-200-10	Cleared by system event			
WARNING	Inlet Over Warning Three Phase Deviation	Inlet 1 on px-10-128-200-11 has a three phase deviation reading of 8.3	px-10-128-200-11	Cleared by system event			
WARNING	Inlet Over Warning Three Phase Deviation	Inlet 1 on PDU-1B has a three phase deviation reading of 8.3	PDU-1B	Cleared by system event			
WARNING	Environmental Sensor Under Warning Threshold	Humidity Sensor reading of 31.00% is under warning threshold	DX2 Relative Humidity 1	Cleared by system event	New York		1A
CRITICAL	Inlet Over Critical Three Phase Deviation	Inlet 1 on D29 Vertical has a three phase deviation reading of 8.3	D29 Vertical	Cleared by system event	New York		2F
WARNING	Inlet Over Warning Three Phase Deviation	Inlet 1 on PDU-2A has a three phase deviation reading of 8.3	PDU-2A	Cleared by system event	Facility Items		
WARNING	Inlet Over Warning Three Phase Deviation	Inlet 1 on PDU-2A has a three phase deviation reading of 8.3	PDU-2A	Cleared by system event	Facility Items		
WARNING	Inlet Over Warning Three Phase Deviation	Inlet 1 on px-10-128-200-10 has a three phase deviation reading of 8.3	px-10-128-200-10	Cleared by system event			
WARNING	Inlet Over Warning Three Phase Deviation	Inlet 1 on px-10-128-200-11 has a three phase deviation reading of 8.3	px-10-128-200-11	Cleared by system event			
WARNING	Inlet Over Warning Three Phase Deviation	Inlet 1 on PDU-2B has a three phase deviation reading of 8.3	PDU-2B	Cleared by system event	Facility Items		
CRITICAL	Inlet Over Critical Three Phase Deviation	Inlet 1 on D29 Vertical has a three phase deviation reading of 8.3	D29 Vertical	Cleared by system event	New York		2F
WARNING	Inlet Over Warning Three Phase Deviation	Inlet 1 on px-10-128-200-10 has a three phase deviation reading of 8.3	px-10-128-200-10	Cleared by system event			

Track. Refer to this guide before making changes in Power IQ. Licensed to Internal Use Only. Power IQ 7.0.0-155 | Copyright © 2007



Audit

Tetszőleges igények alapján



Locations

Search Items

Add New Items

Waldo

Barcode Scan

Total Number of matches found : 7

DEMO - 1 items

Device : WALDO

Dell - PowerEdge R710

Planned Both,none/2



SITE A - 5 items

Device : WALDO

Dell - PowerEdge R710

Planned Both,25/2



Network : WALDO-DCT-TOPOFRACK-SWITC...

Cisco Systems - Nexus N2K-C2248TP-1GE

Planned Both,47/1



Network : WALDO-DCT-TOPOFRACK-SWITC...

Cisco Systems - Nexus N2K-C2248TP-1GE

Planned Both,45/1



Device : WALDO-UCS-01A

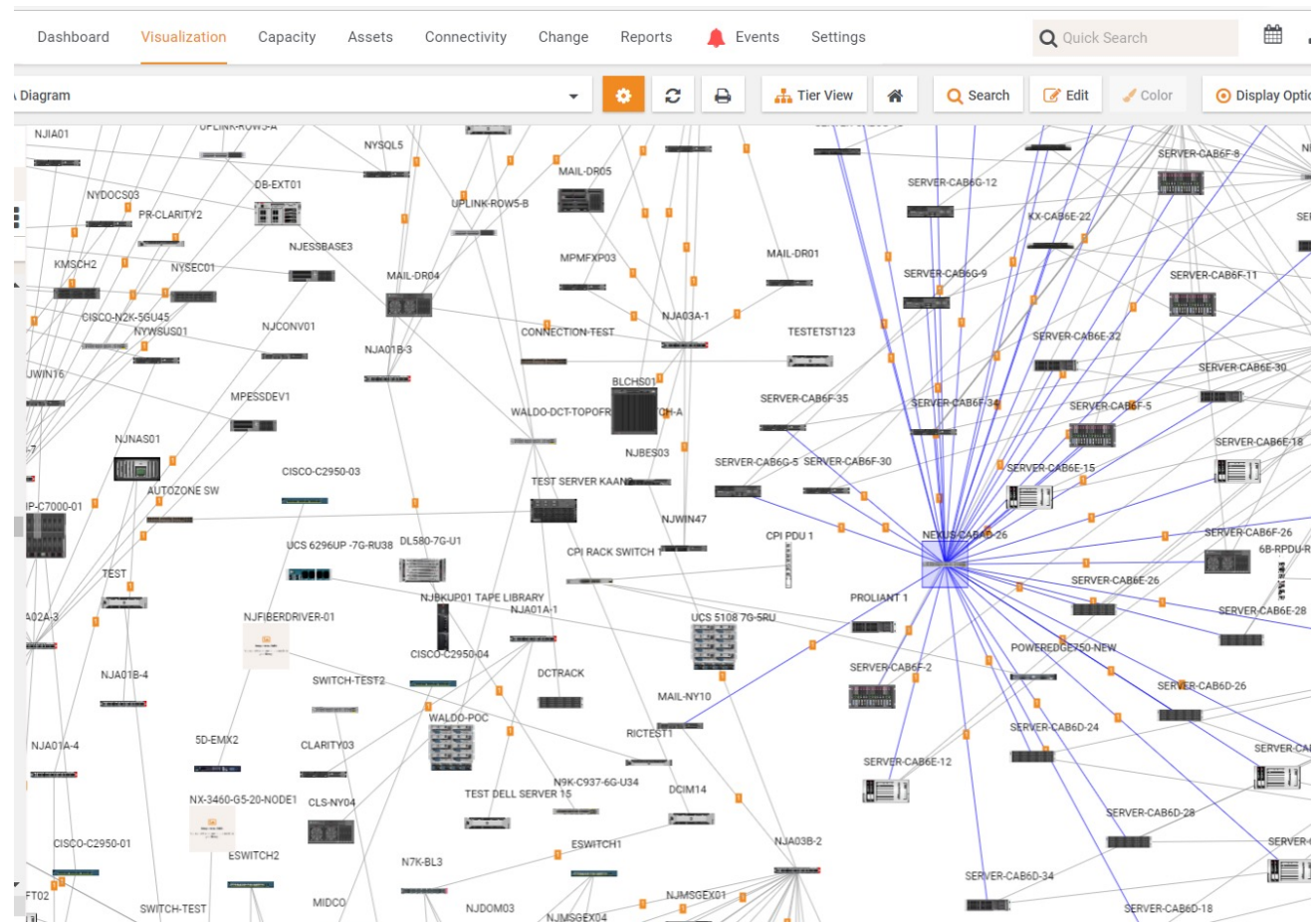
Cisco Systems - UCS 5108

Planned Both.1/6



Audit

Kapcsolatok



Szünet

Jó étvágyat, kellemes beszélgetést!

